

Need an amazing tutor?

www.teachme2.com/matric



Collected and collated by

teachme2



basic education

Department:
Basic Education
REPUBLIC OF SOUTH AFRICA

**NATIONAL
SENIOR CERTIFICATE**

GRADE 12

ENGINEERING GRAPHICS AND DESIGN P1

NOVEMBER 2024

MARKING GUIDELINES

MARKS: 100

These marking guidelines consist of 7 pages.

ANSWERS		
1	DRAWING NUMBER	1
2	D <u>BRITS</u>	1
3	<u>CHEETAH</u> PRINTERS	1
4	POLOKWANE	1
5	<u>ADD WATER TANK</u>	1
6	1173,5	1
7	BUILDING LINE	1
8	WILLOW TREE	1
9	2000	1
10	TO BE REMOVED / DEMOLISHED	1
11	<u>WATER</u> STORAGE <u>TANK</u>	1
12	PAVERS	1
13	BUILT-IN CUPBOARD	1
14	BROWN	1
15	16,58 ✓ CONVERTED TO METRES ✓	2
16	NORTH-EAST / NE	2
17	22	2
18	See below	3
19		3
20		4
TOTAL		30

ANSWER 18

Show ALL calculations.

ADDING OF SIDES (+, +, ...) ✓

$$P = AB + BC + CF + FA$$

$$= (76,77 + 63,34 + 76,77 + 63,34)$$

$$= 280,22 \quad \text{CONVERTED TO METRES}$$

ANSWER 19

Show ALL calculations.

APPLYING CORRECT FORMULA ✓

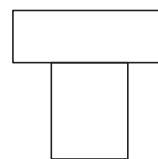
$$A = L \times B$$

$$= (17,5 \times 9,6) + (3,5 \times 10,7) + (7,7 \times 1,5) + (10,7 \times 2,4 / 2)$$

$$= 168 + 37,45 + 11,55 + 12,84$$

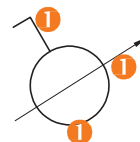
$$= 229.84 \text{ m}^2$$

ANSWER 20.1



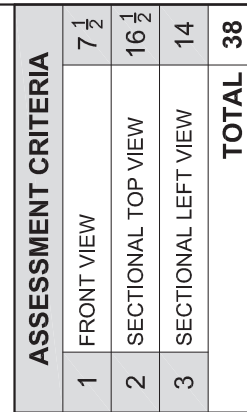
TOP RECTANGLE ✓
BOTTOM RECTANGLE ✓

ANSWER 20.2

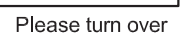


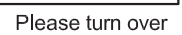
1 BOTH IN
FREEHAND

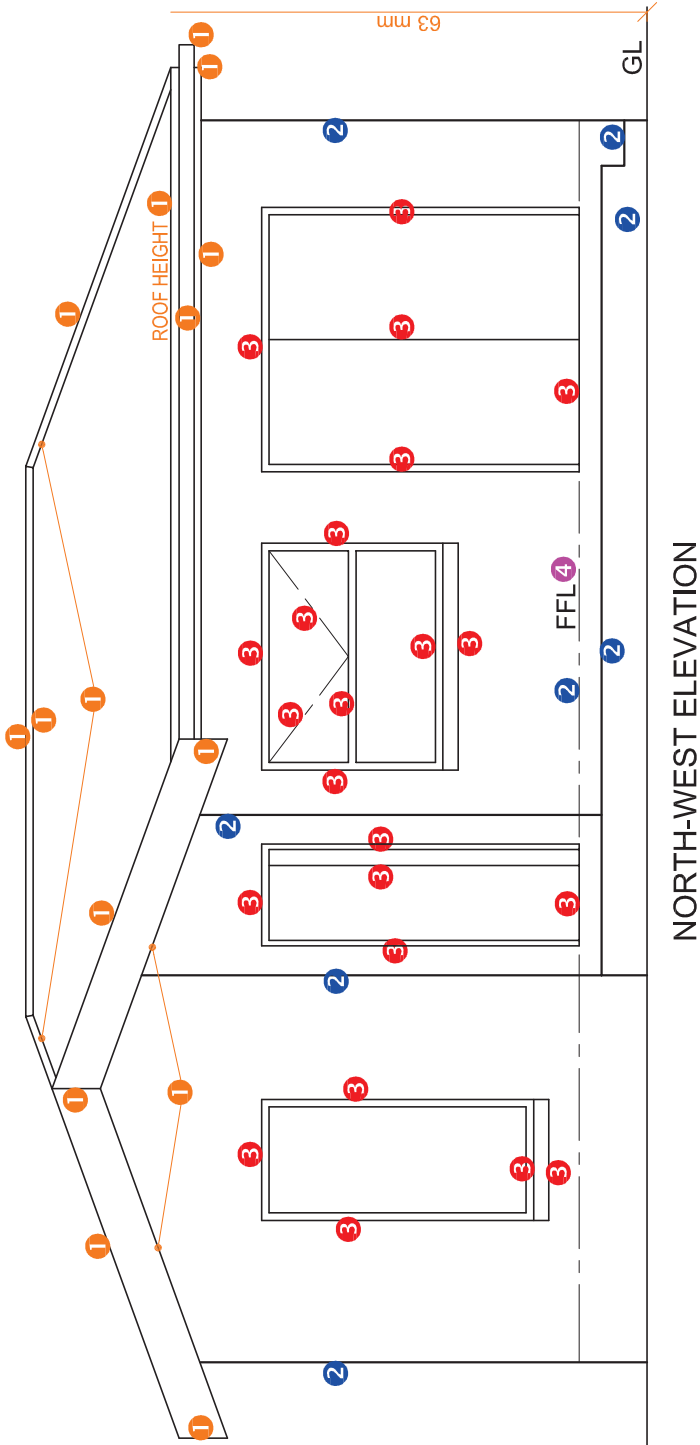
PAPER 1 QUESTION 1
 GRADE 12
 NOVEMBER 2024
 MARKING GUIDELINES



PAPER 1 QUESTION 2
GRADE 12
NOVEMBER 2024
MARKING GUIDELINES







ASSESSMENT CRITERIA	
NORTH-WEST ELEVATION	
1	ROOF + RWDP 7 ¹ / ₂
2	WALLS + STEPS 4
3	DOORS + WINDOWS 11 ¹ / ₂
4	LABELS 1 ¹ / ₂
SUBTOTAL	
23 ¹ / ₂	

PAPER 1 QUESTION 4
GRADE 12
NOVEMBER 2024
MARKING GUIDELINES

