

# Need an amazing tutor?

[www.teachme2.com/matric](http://www.teachme2.com/matric)



Collected and collated by

**teachme2**



# basic education

Department:  
Basic Education  
**REPUBLIC OF SOUTH AFRICA**

## **NATIONAL SENIOR CERTIFICATE**

**GRADE 12**

**MATHEMATICAL LITERACY P2**

**ADDENDUM**

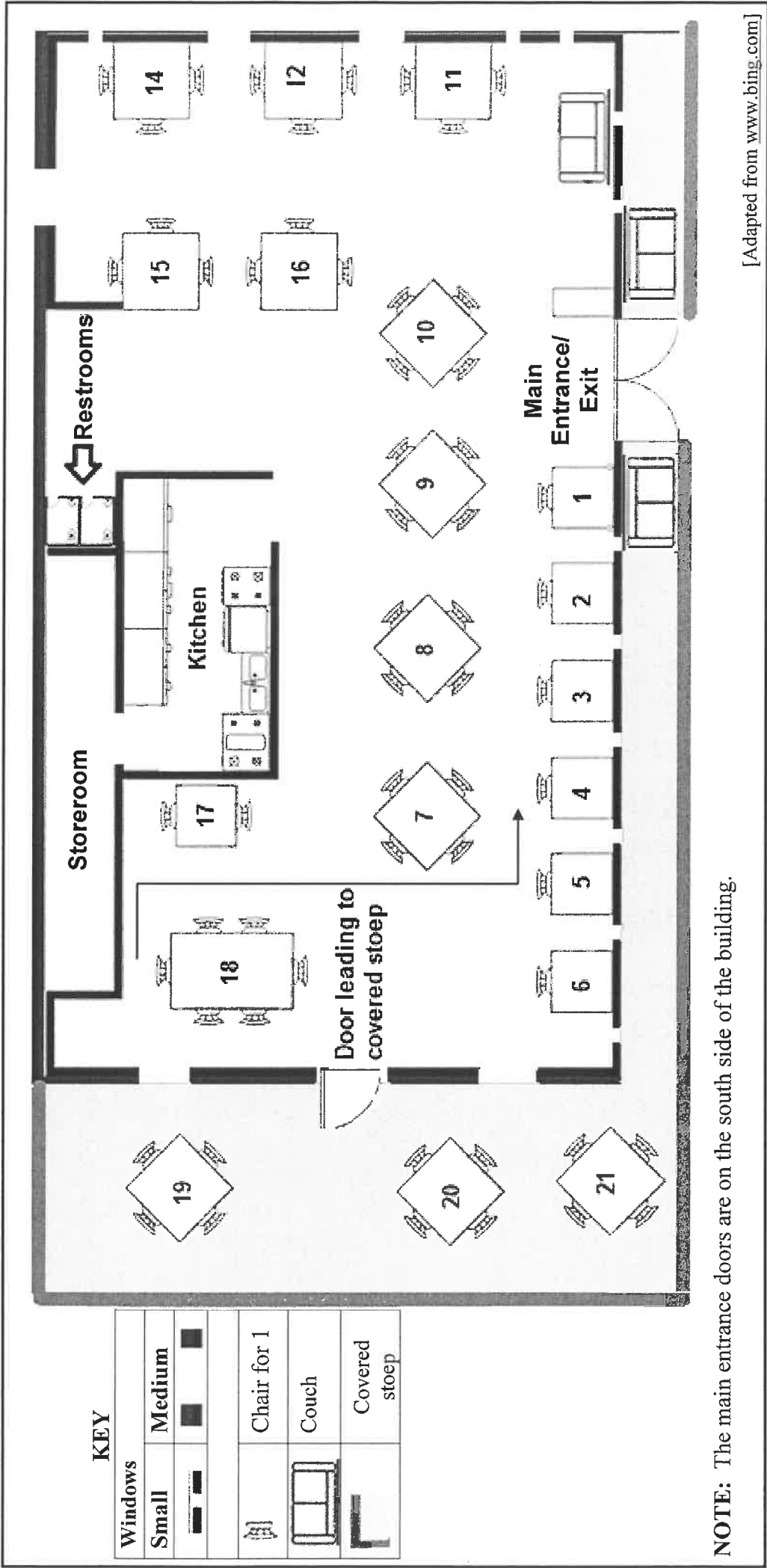
**NOVEMBER 2022**

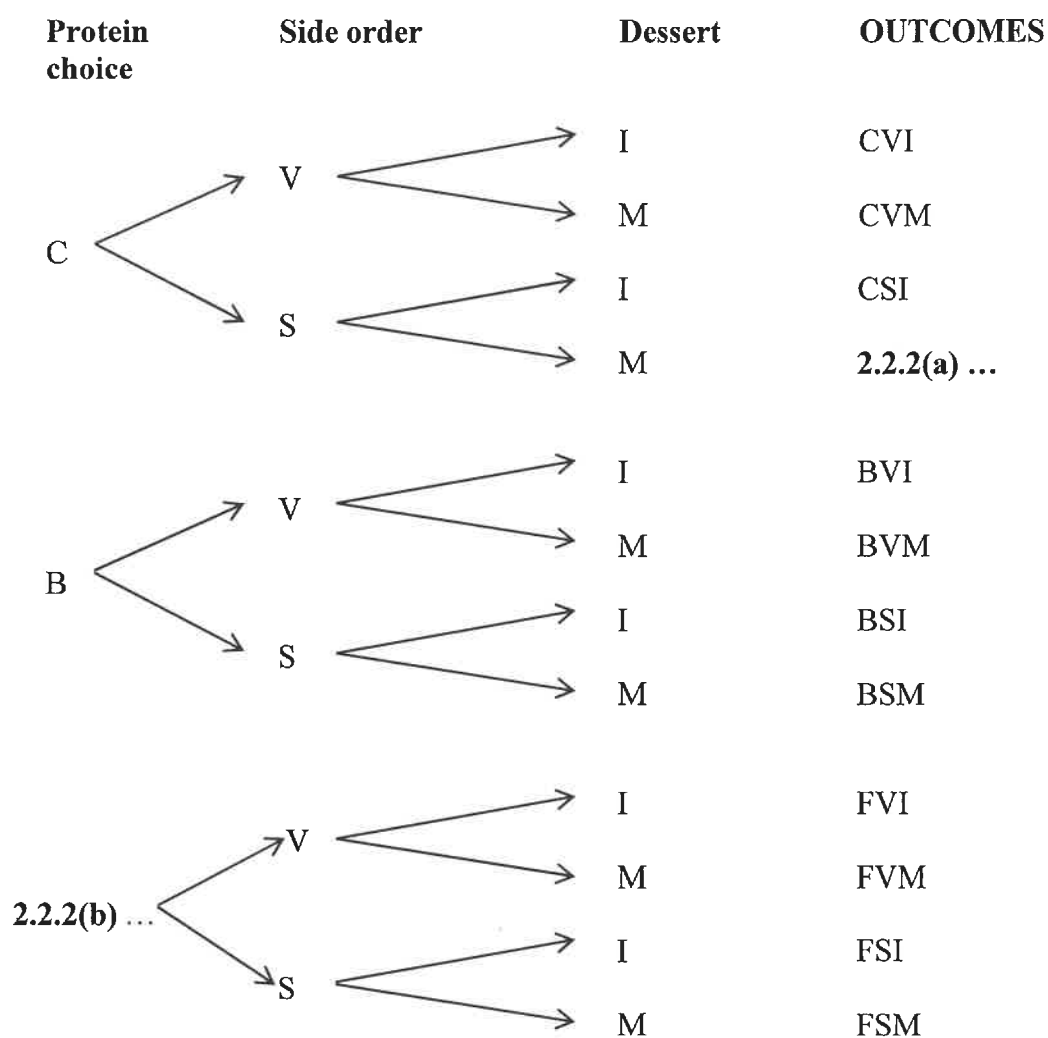
**This addendum consists of 6 pages with 5 annexures.**

ANNEXURE A

QUESTION 2.1

SEATING PLAN OF THE RESTAURANT

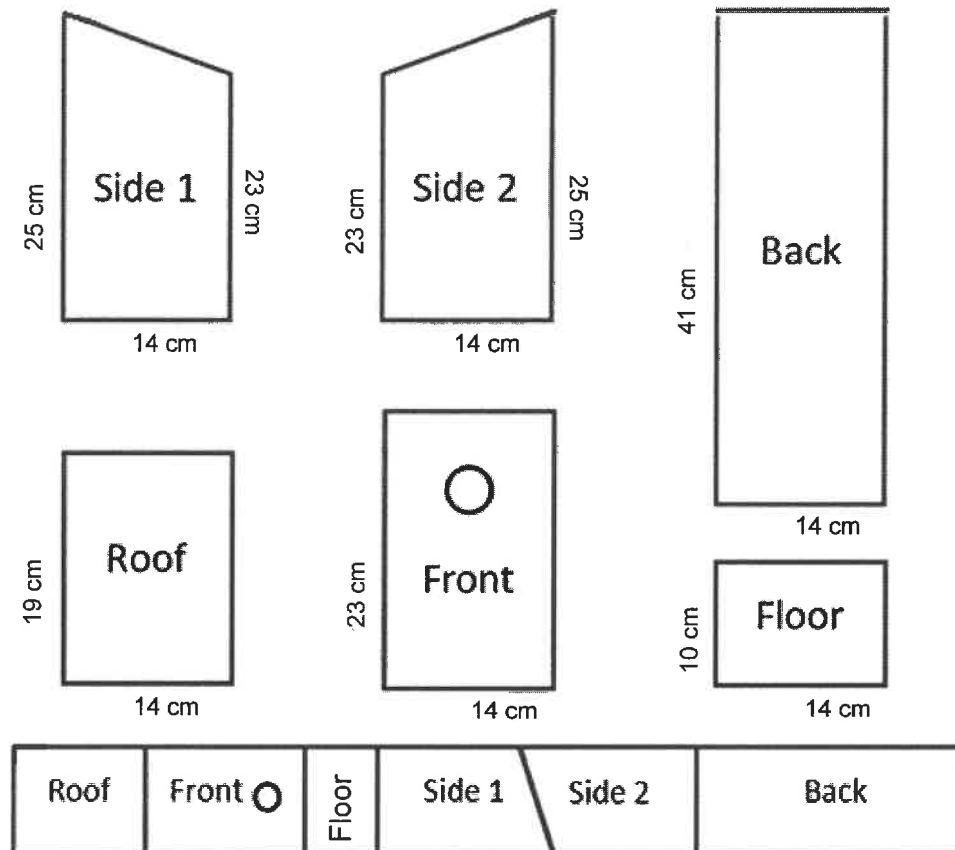


**ANNEXURE B****QUESTION 2.2****CHOICES FROM A SET MENU AT THE RESTAURANT**

## ANNEXURE C

## QUESTION 4.1

DIAGRAM OF THE PARTS OF A BIRDHOUSE

[Adapted from [www.SunCatcherStudio.com](http://www.SunCatcherStudio.com)]

## ASSEMBLY INSTRUCTIONS FOR THE BIRDHOUSE

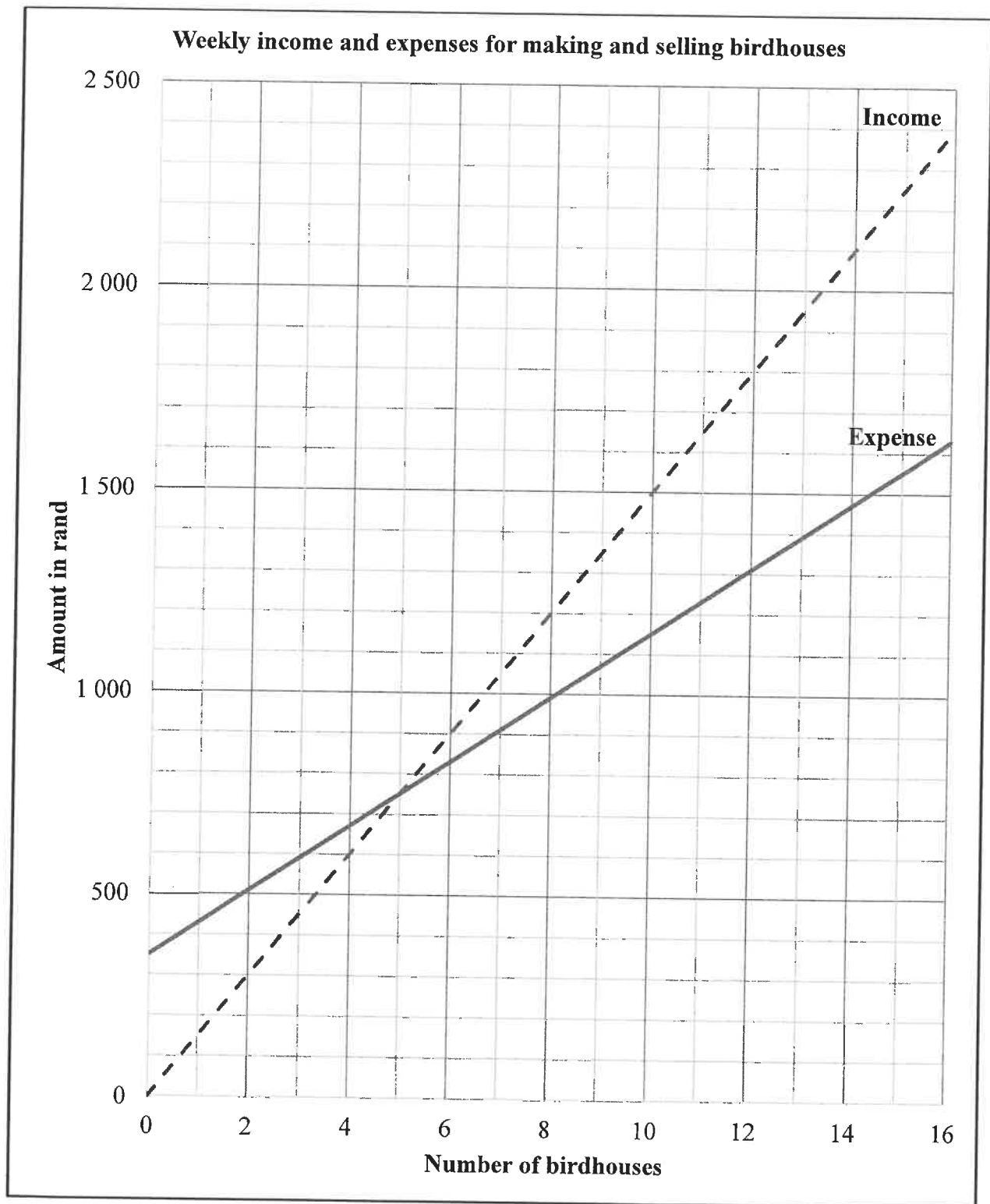
STEP	WHAT TO DO
1	Nail the longest side of side 1 and side 2 to the back.
2	Position the floor between the two sides and the back and nail it in place.
3	Nail the front on the two sides and the floor.
4	Place the roof in position and nail it.

## FINAL PRODUCT



## ANNEXURE D

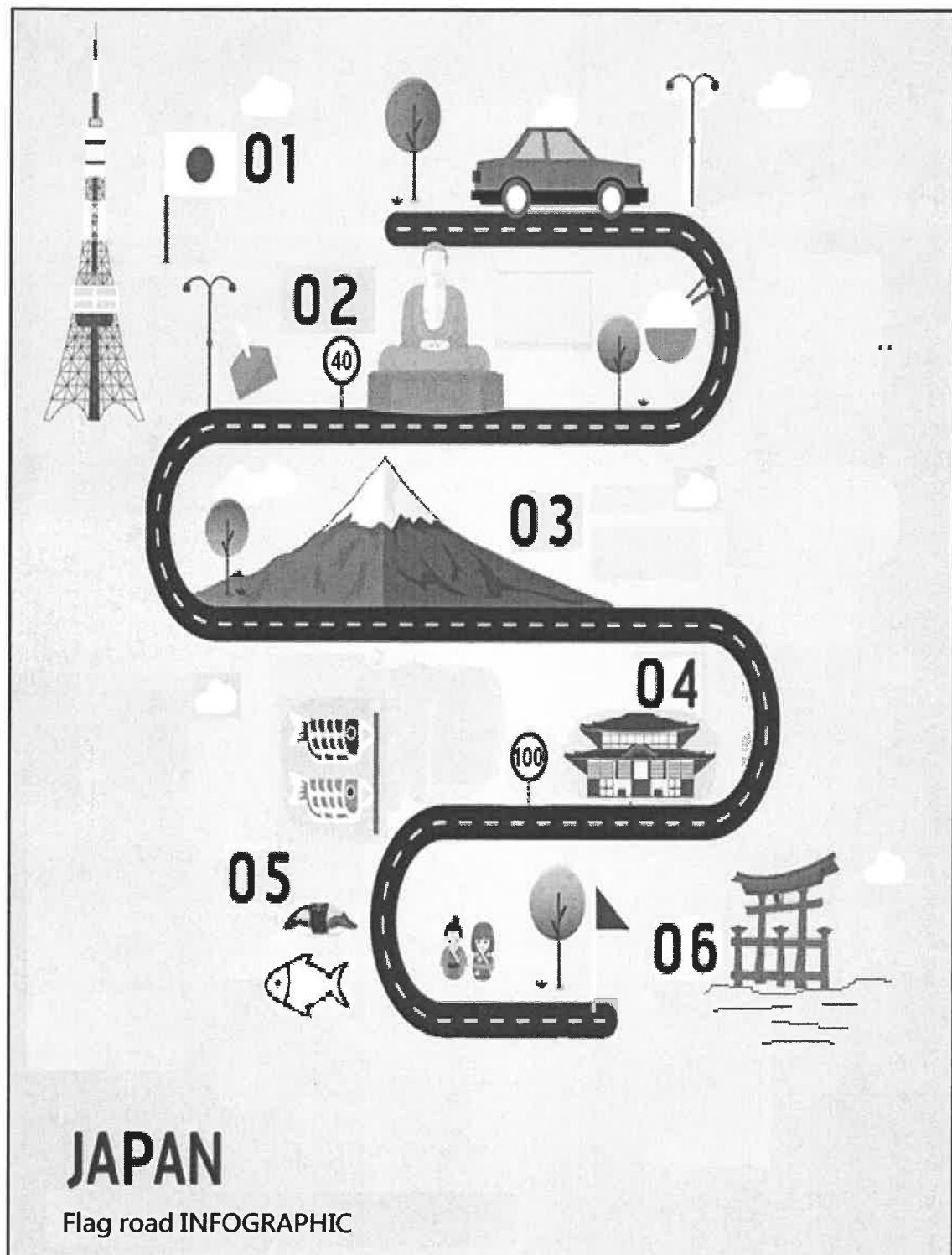
## QUESTION 4.3



## ANNEXURE E

## QUESTION 5.1

## ROAD INFOGRAPHIC OF JAPAN SHOWING TOURIST LOCATION DETAILS

[Adapted from [Vectorstock.com](http://Vectorstock.com)]