

Need an amazing tutor?

www.teachme2.com/matric



Collected and collated by

teachme2



basic education

Department:
Basic Education
REPUBLIC OF SOUTH AFRICA

NATIONAL SENIOR CERTIFICATE

GRADE 12

ENGLISH HOME LANGUAGE P3

NOVEMBER 2023

MARKS: 100

TIME: 3 hours

This question paper consists of 7 pages.

INSTRUCTIONS AND INFORMATION

1. This question paper consists of TWO sections:

SECTION A: Essay (50)
SECTION B: Transactional Texts (2 x 25) (50)
2. Answer ONE question in SECTION A and TWO questions in SECTION B.
3. Write in the language in which you are being assessed.
4. Start EACH section on a NEW page.
5. You must plan (e.g. using a mind map/diagram/flow chart/key words), edit and proofread your work. The plan must appear BEFORE the answer.
6. All planning must be clearly indicated as such. It is advisable to draw a line through all planning.
7. You are strongly advised to spend your time as follows:

SECTION A: approximately 100 minutes
SECTION B: approximately 80 (2 x 40) minutes
8. Number the answers correctly according to the numbering system used in this question paper.
9. The title/heading must NOT be included when doing a word count.
10. Write neatly and legibly.

SECTION A: ESSAY**QUESTION 1**

Write an essay of 400–450 words (2–2½ pages) on ONE of the following topics. Write down the NUMBER and TITLE/HEADING of your essay.

- | | | |
|-----|---|------|
| 1.1 | The rhythm of city life | [50] |
| 1.2 | Abolishing plastic is an unrealistic expectation. | [50] |
| 1.3 | 'Truth never dies.
It may not come out
But it never dies.
It may kill you
But it never dies.' | |
| | – Amulya Sonaali Michah | [50] |
| 1.4 | It was a loud and hearty laugh that broke through the awkward silence of the room ... | [50] |
| 1.5 | In the rear-view mirror | [50] |

The pictures reproduced on pages 4 and 5 may evoke a reaction or feeling in you or stir your imagination.

Select ONE picture and write an essay in response. Write the question number (1.6, 1.7 OR 1.8) of your choice and give your essay a title.

NOTE: There must be a clear link between your essay and the picture you have chosen.

1.6



[Source: gettysimages.com]

[50]

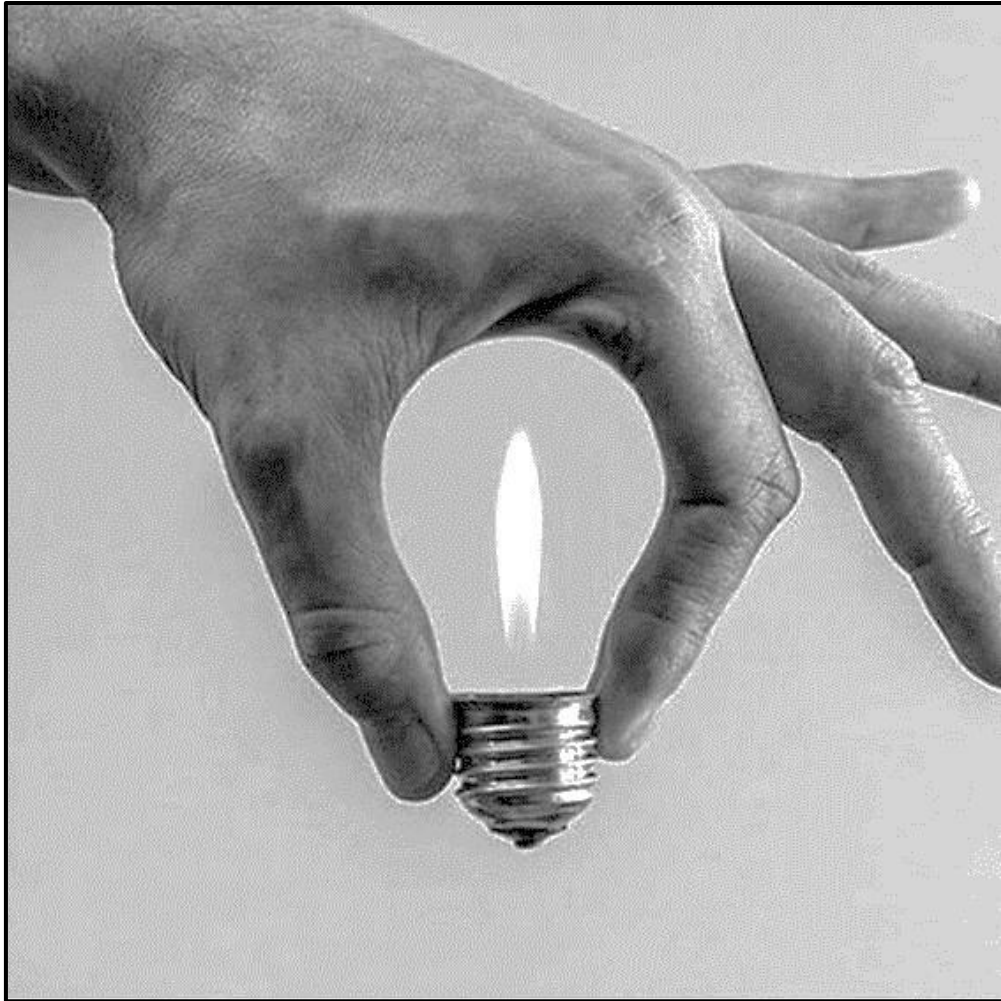
1.7



[Source: mindfulsoulwellbeing.com]

[50]

1.8



[Source: pinterest.com]

[50]

TOTAL SECTION A: 50

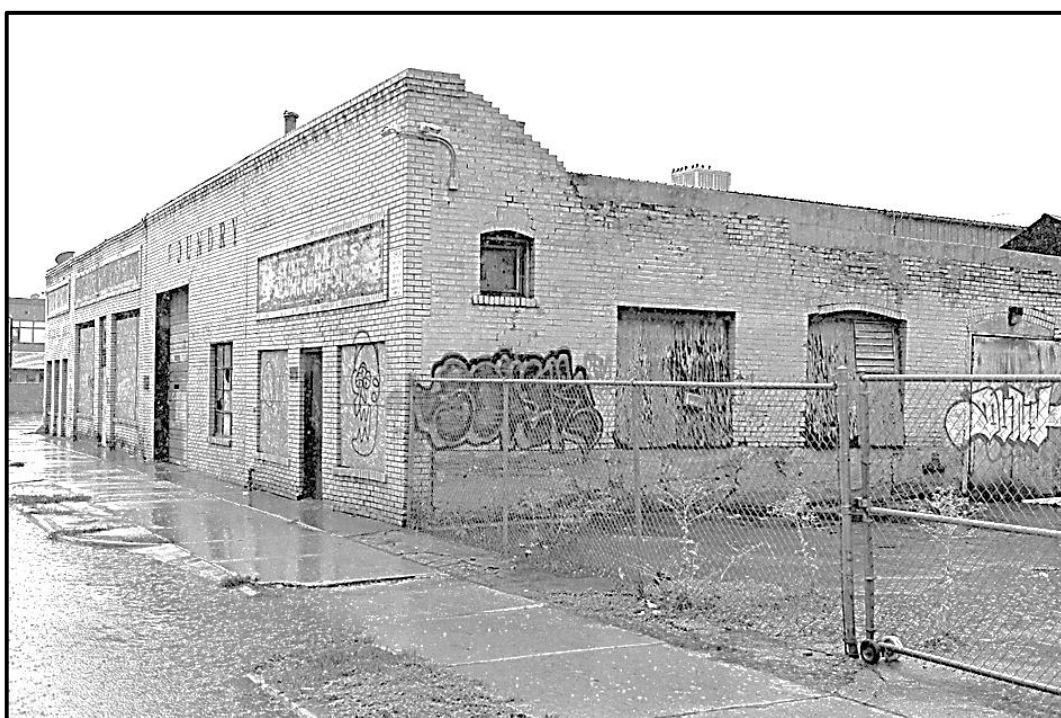
SECTION B: TRANSACTIONAL TEXTS**QUESTION 2**

- Respond to TWO of the following topics.
- The body of each of your answers should be 180–200 words (20–25 lines) in length.
- Pay careful attention to the following:
 - Audience, register, tone and style
 - Choice of words and language structure
 - Format
- Write down the NUMBER and TITLE/HEADING of the text you have chosen, e.g. 2.1 DIALOGUE.

2.1 DIALOGUE

You have strong views on whether there is a place for traditions in a modern democracy.

Write the dialogue between you and someone with opposing views.

[25]**2.2 FORMAL LETTER**

[Source: www.sltrib.com]

Abandoned buildings are creating major problems and becoming a source of concern in your city.

Write a letter of complaint to your City Councillor.

[25]

2.3 MAGAZINE ARTICLE

Multinational corporations are using 'green spaces' for the development of a concrete jungle.

Write a magazine article presenting your views about this phenomenon. **[25]**

2.4 SPEECH

School-based surveys have revealed that the emotional well-being of young people is linked to the unhealthy lifestyle they lead.

Write a speech that you will present at a youth club meeting, with the aim of convincing the audience to change their lifestyle habits. **[25]**

2.5 E-MAIL

A youth organisation to which you belong hosted a successful open-air concert at a stadium in your town.

Write an e-mail to the Director of Public Facilities, thanking her/him for the use of the stadium and providing feedback on the event. **[25]**

2.6 FORMAL REPORT

Many residents in your community have left the local Home Affairs office feeling frustrated. As the secretary of Citizens Unite, a civic organisation, you have been tasked with investigating the residents' concerns.

Write the formal report that you will submit to the chairperson of Citizens Unite. **[25]**

TOTAL SECTION B: 50
GRAND TOTAL: 100