

# Need an amazing tutor?

[www.teachme2.com/matric](http://www.teachme2.com/matric)



Collected and collated by

**teachme2**



# basic education

Department:  
Basic Education  
**REPUBLIC OF SOUTH AFRICA**

## **SENIOR CERTIFICATE EXAMINATIONS/ NATIONAL SENIOR CERTIFICATE EXAMINATIONS**

### **ENGINEERING GRAPHICS AND DESIGN P1**

**2023**

### **MARKING GUIDELINES**

**MARKS: 100**

**These marking guidelines consist of 7 pages.**

ANSWERS		
1	84-0213	1
2	EXPRESS PRINTERS	1
3	PALISADE	1
4	STONE HILL	1
5	1 : 900	1
6	COMPUTER CENTRE / -BUILDING	1
7	4	1
8	ASPHALT	1
9	INSPECTION EYE	1
10	PALM TREE	1
11	GENERATOR	1
12	EAST	1
13	7500 I	2
14	100-YEAR FLOOD LINE	2
15	WATER CLOSET	1
16	BLACK	1
17	18,6	2
18	See below	3
19		3
20		4
TOTAL		30

## ANSWER 18

Show ALL calculations.

ADDING OF SIDES (+, +, ...), i.e.: ✓

$$P = GD + DE + EF + FG$$

$$= (50.5 + 33.4 + 36.6 + 30.4) - (3 \times 4)$$

$$= 138.9 \text{ m}$$

✓  
CONVERTED TO METERS

## ANSWER 19

Show ALL calculations.

APPLYING CORRECT FORMULA, i.e.: ✓

$$A = L \times B$$

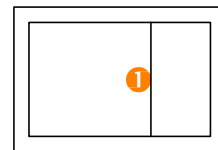
$$= [(21 \times 25) + (29 \times 7)] - (11 \times 18)$$

$$= 728 - 198$$

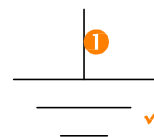
$$= 530 \text{ m}^2$$

## ANSWER 20

20.1

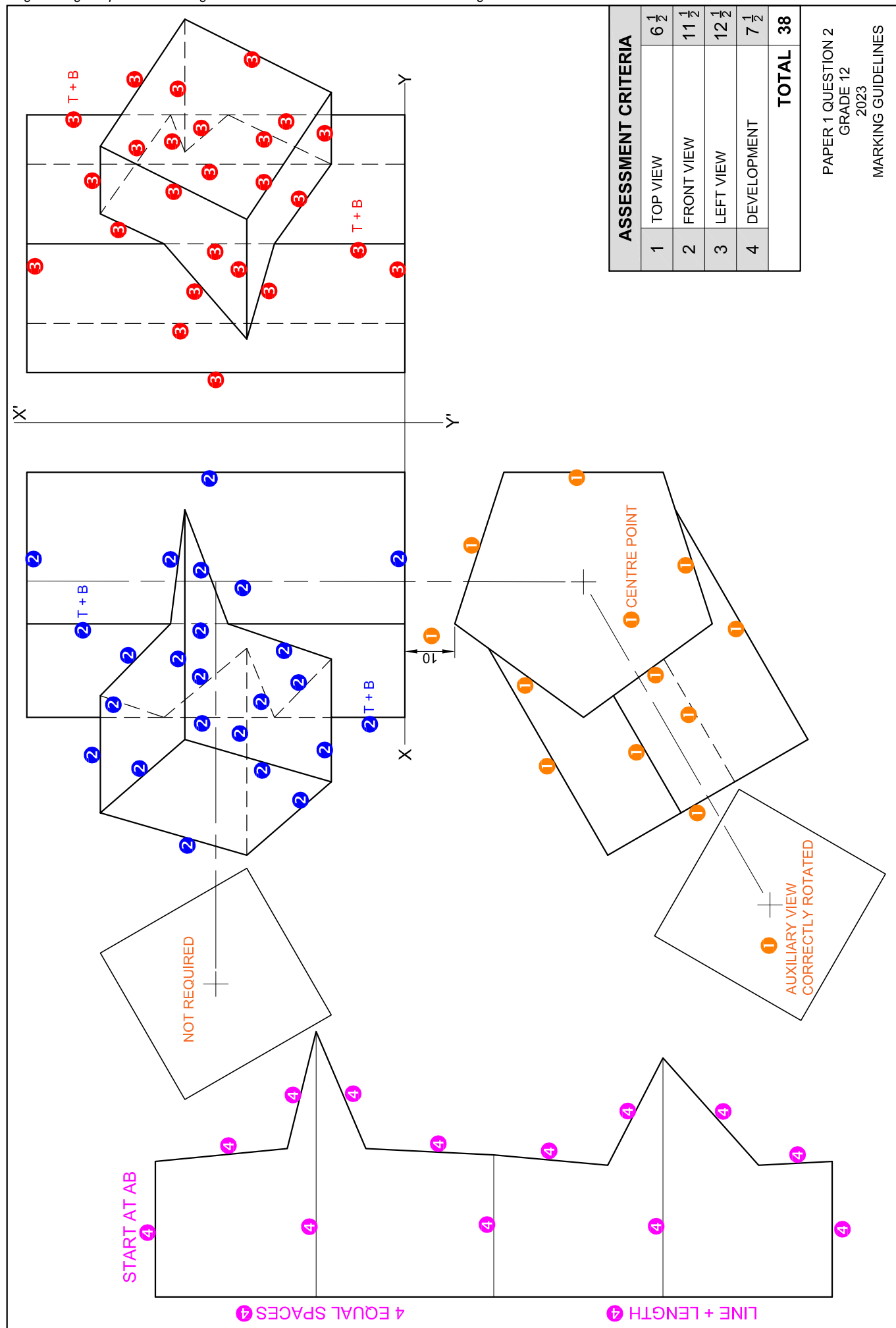
OUTER RECTANGLE ✓  
INNER RECTANGLE ①

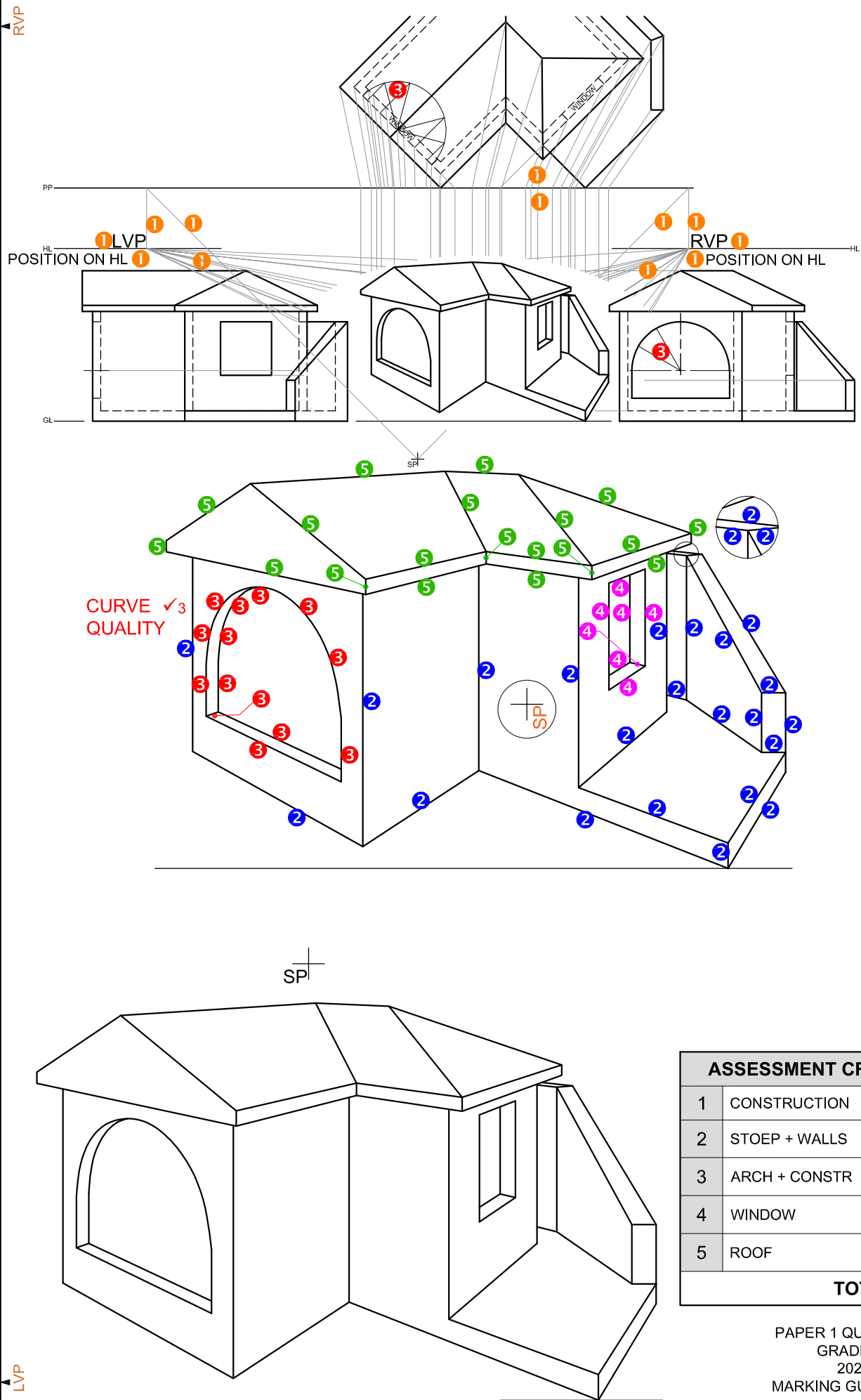
20.2

① FREEHAND  
FOR BOTH

ASSESSMENT CRITERIA	
1	TOP VIEW $6\frac{1}{2}$
2	FRONT VIEW $11\frac{1}{2}$
3	LEFT VIEW $12\frac{1}{2}$
4	DEVELOPMENT $7\frac{1}{2}$
TOTAL 38	

## MARKING GUIDELINES

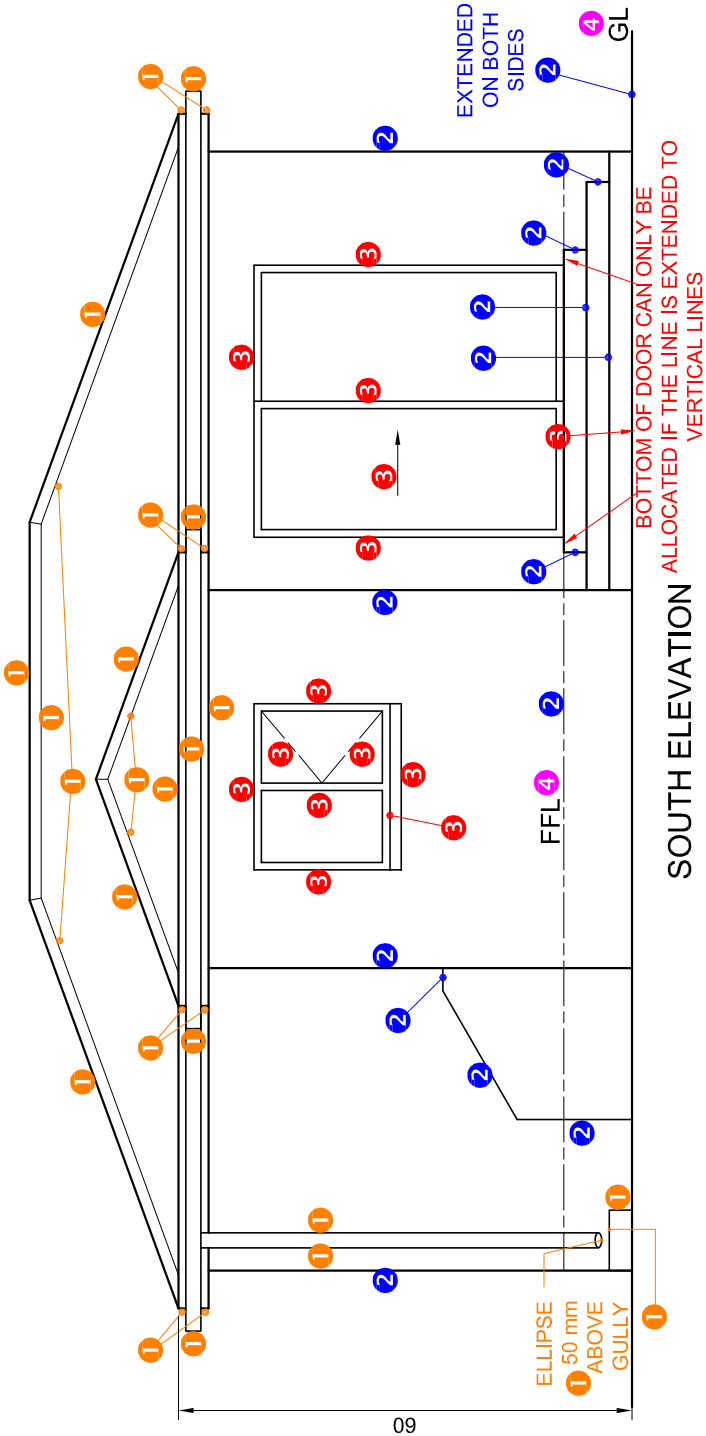






ASSESSMENT CRITERIA	
FLOOR PLAN	
1	DOORS + WINDOWS 13
2	FIXTURES 8
3	ELECTRICAL 9
4	HATCHING 3
5	LABELS $2\frac{1}{2}$
SUBTOTAL $35\frac{1}{2}$	

PAPER 1 QUESTION 4  
GRADE 12  
2023  
MARKING GUIDELINES



ASSESSMENT CRITERIA	
SOUTH ELEVATION	
1	ROOF + RWDP + GULLY
2	WALLS + FFL
3	DOOR + WINDOW
4	LABELS
SUBTOTAL	
27	

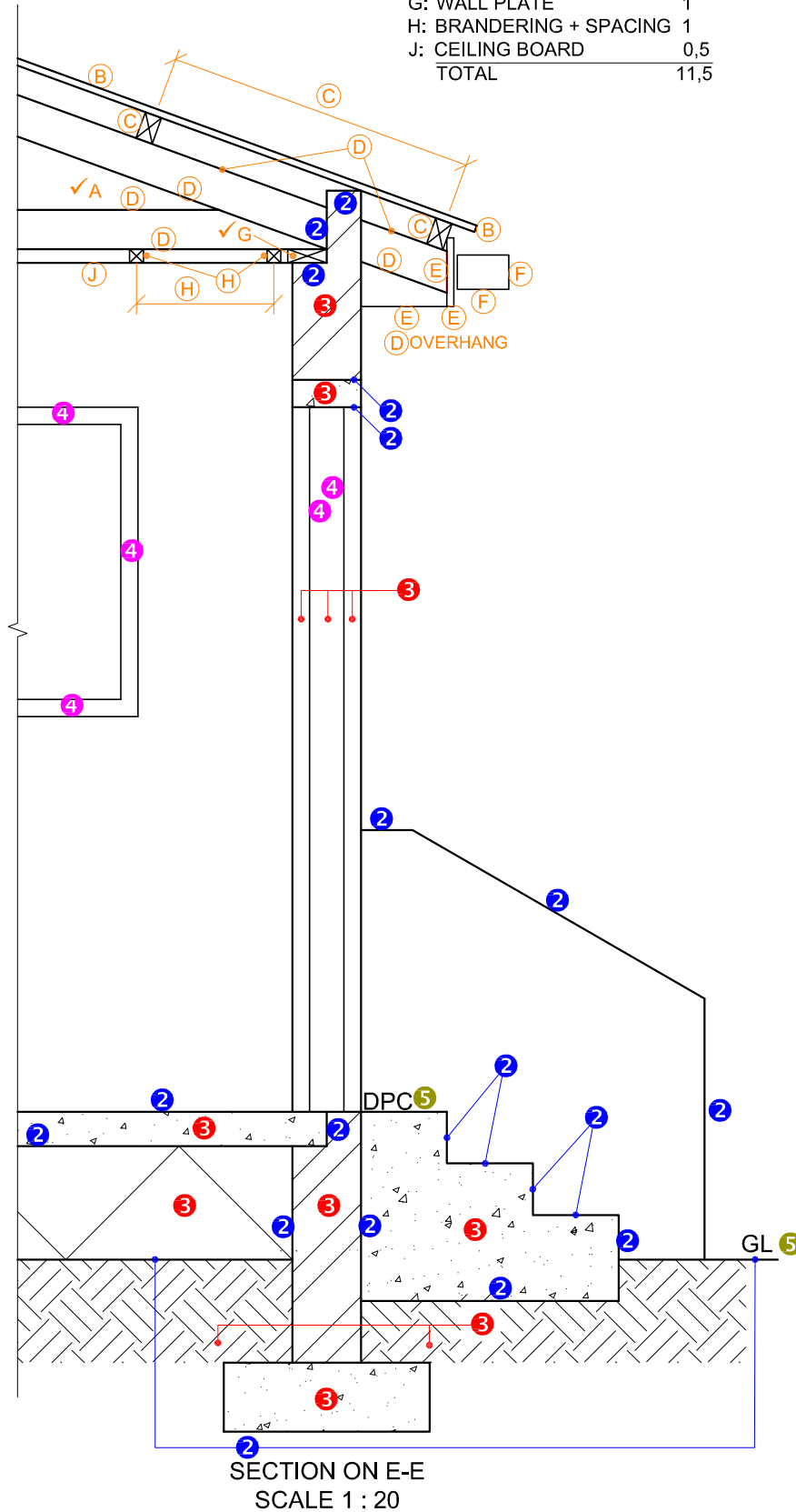
PAPER 1 QUESTION 4  
GRADE 12  
2023  
MARKING GUIDELINES

**3. HATCHING ALLOCATION**

SANS COMPLIANT	0.5
HATCHING CORRECTLY APPLIED	0.5
<b>TOTAL</b>	<b>1</b>

**1. MARK ALLOCATION FOR ROOF**

A: ROOF ANGLE	1
B: ROOF SHEET	1
C: PURLIN + SPACING	1,5
D: TRUSS + OVERHANG	3
E: FACIA	1,5
F: GUTTER	1
G: WALL PLATE	1
H: BRANDERING + SPACING	1
J: CEILING BOARD	0,5
<b>TOTAL</b>	<b>11,5</b>

**ASSESSMENT CRITERIA****DETAILED SECTION**

1	ROOF DETAIL	11 $\frac{1}{2}$
2	SLAB + WALL + STEP	9
3	HATCHING	5 $\frac{1}{2}$
4	WINDOW + DOOR	2 $\frac{1}{2}$
5	LABELS	1
<b>SUBTOTAL</b>		<b>29 <math>\frac{1}{2}</math></b>

PAPER 1 QUESTION 4  
GRADE 12  
2023  
MARKING GUIDELINES