

Need an amazing tutor?

www.teachme2.com/matric



Collected and collated by

teachme2



basic education

Department:
Basic Education
REPUBLIC OF SOUTH AFRICA

SENIOR CERTIFICATE EXAMINATIONS/ NATIONAL SENIOR CERTIFICATE EXAMINATIONS

ENGINEERING GRAPHICS AND DESIGN P2

2021

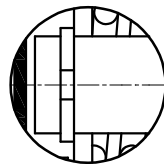
MARKING GUIDELINES

MARKS: 100

These marking guidelines consist of 7 pages.

ANSWERS		
1	REAR DERAILLEUR ASSEMBLY	1
2	SPEED STREET	1
3	3	1
4	MAFIKA	1
5	VBJW031	1
6	SECTIONAL RIGHT VIEW	2
7	See below	1
8	3	1
9	B: R5 C: 16 D: 20 E: 98	4
10	135°	1
11	17	1
12	KNURLING	1
13	ACROSS FLATS	1
14	REVOLVED SECTION	1
15	See below	3
16	ALIGNED SECTION	1
17	1.64	2
18	See below	3
19		3
TOTAL		30

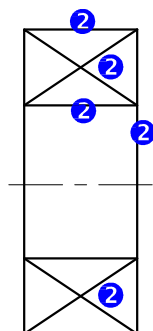
ANSWER 7



DETAIL Z

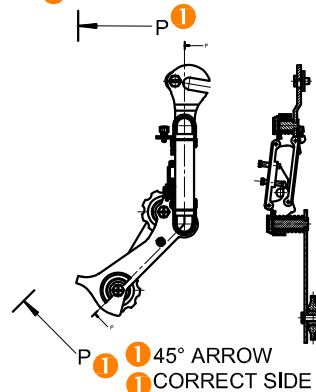
ANSWER 18

2 FREEHAND



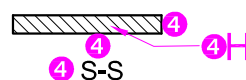
ANSWER 15

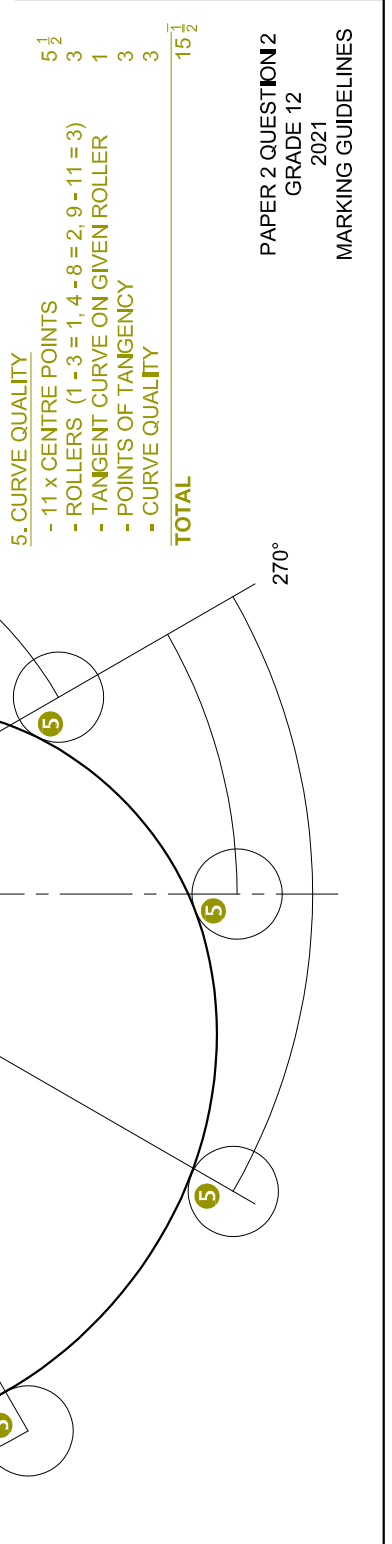
1 0° ARROW
1 CORRECT SIDE

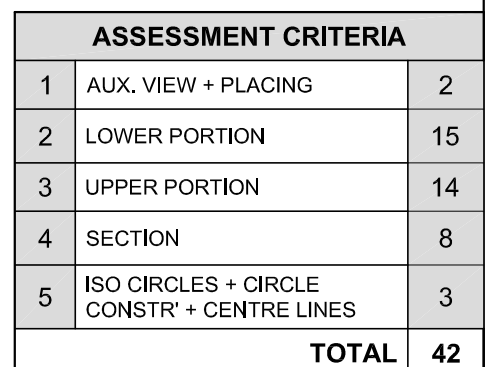


ANSWER 19

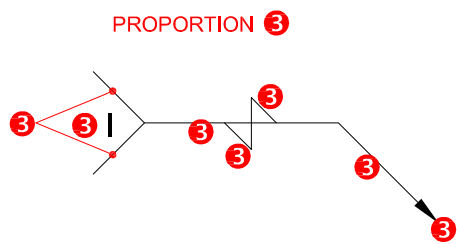
4 FREEHAND
4 PROPORTION



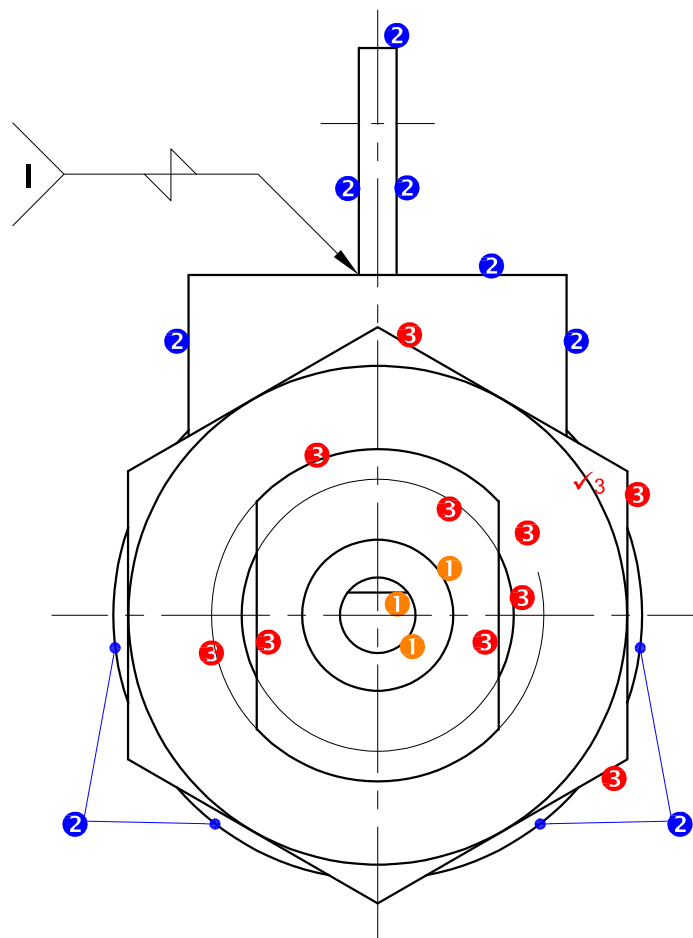




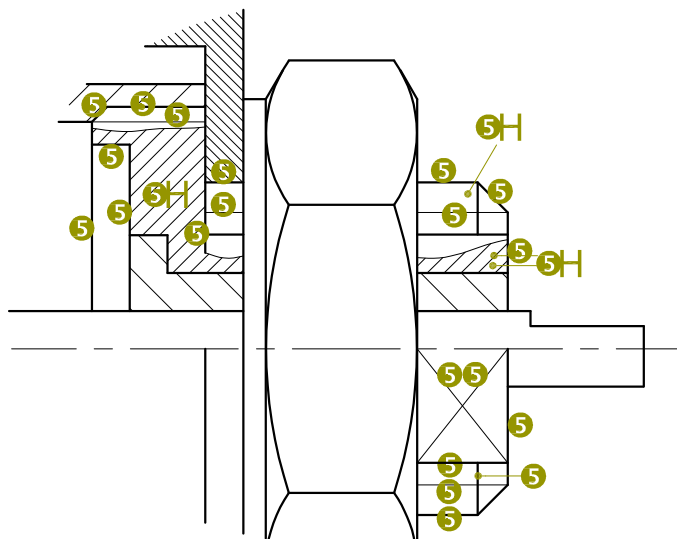
Please turn over



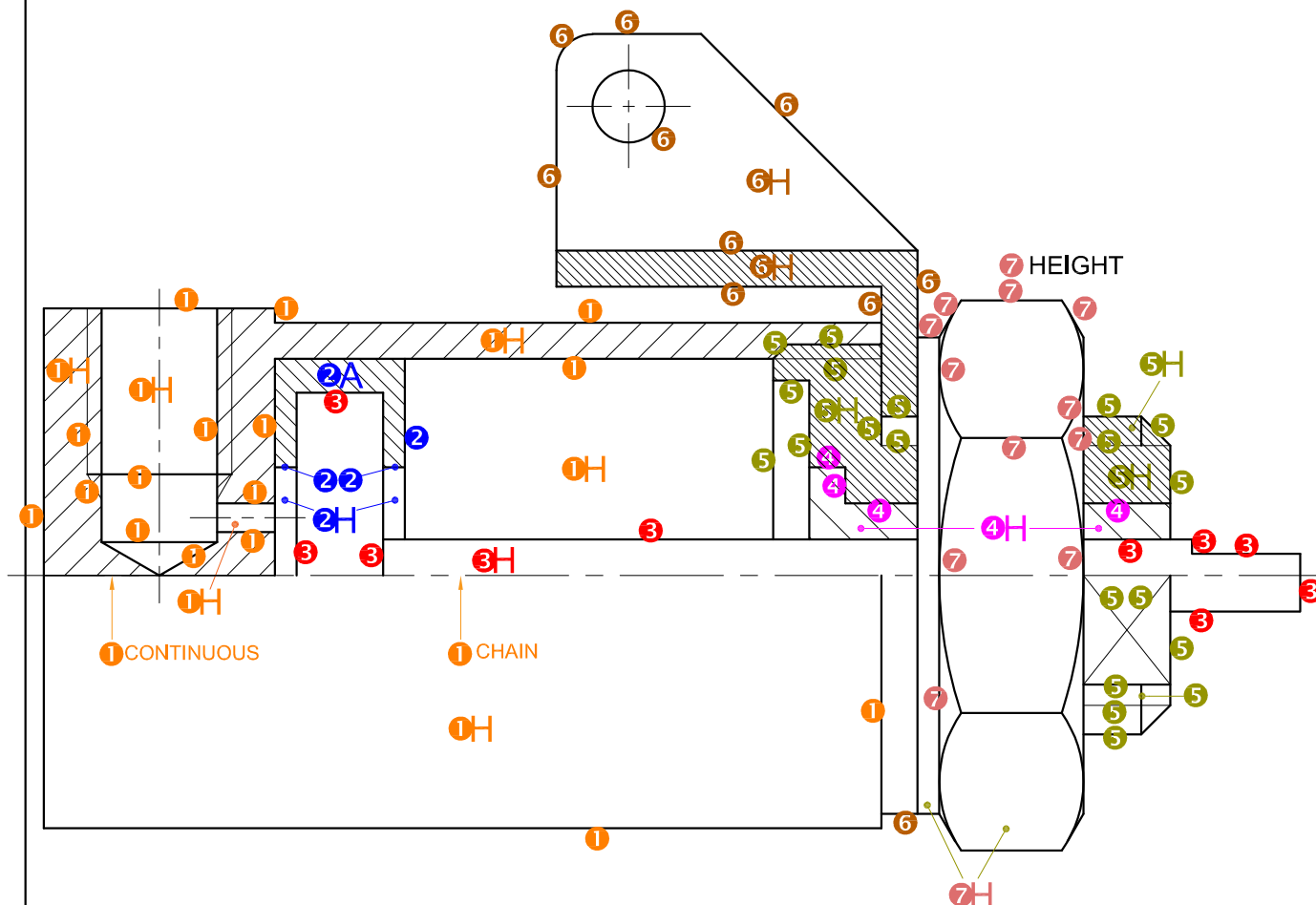
RIGHT VIEW		
		POSSIBLE
1	SHAFT + BUSH	1 $\frac{1}{2}$
2	CYLINDER + BRACKET + HOOK	4
3	M44 NUT + GUIDE	6
SUBTOTAL		11 $\frac{1}{2}$



1	CYLINDER	12
2	RUBBER SEAL	2 $\frac{1}{2}$
3	PLUNGER	5
4	BUSH	2 $\frac{1}{2}$
5	GUIDE	11 $\frac{1}{2}$
6	BRACKET + HOOK	6
7	M44 NUT + WASHER	6 $\frac{1}{2}$
SUBTOTAL		46



ALTERNATIVE ANSWER WITH A PART SECTION



Copyright reserved

1. CENTRE LINE MARK ALLOCATION

SANS COMPLIANT (LINE TYPE)

1

11 CENTRE LINES (1 - 2 = 0, 3 - 5 = 1, 6 - 7 = 2)

2

TOTAL**3****2. ASSEMBLY**

1 MARK FOR EVERY

COMPONENT CORRECTLY

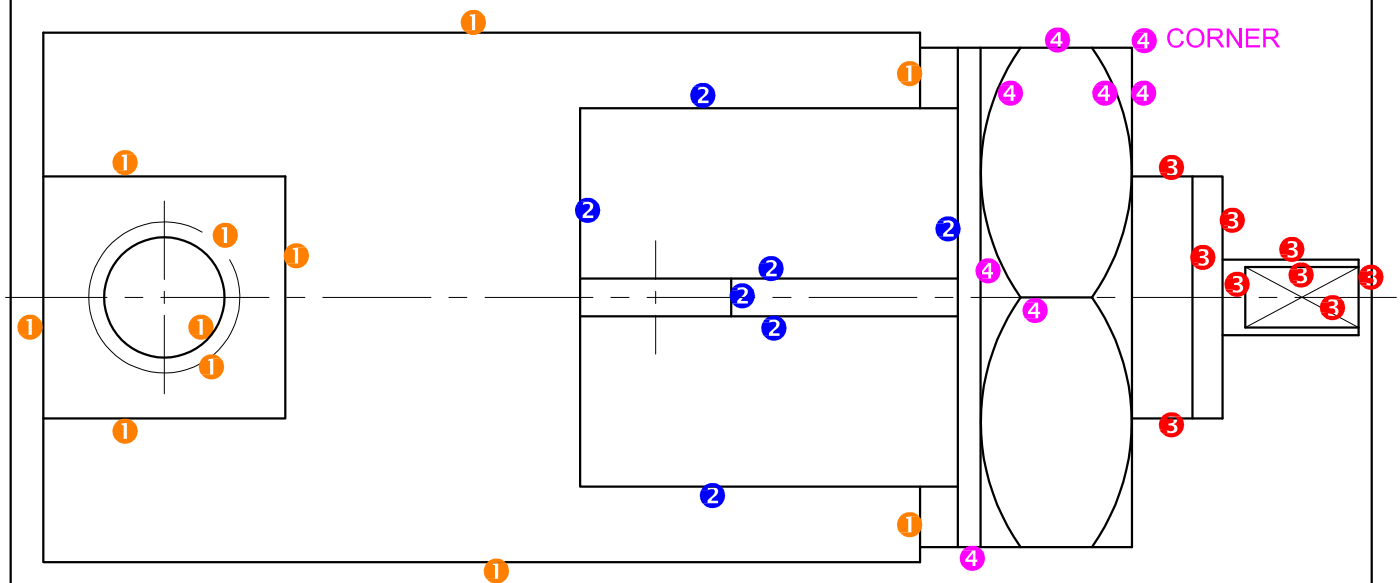
ASSEMBLED (9 PARTS -1) = 8

TOP VIEW

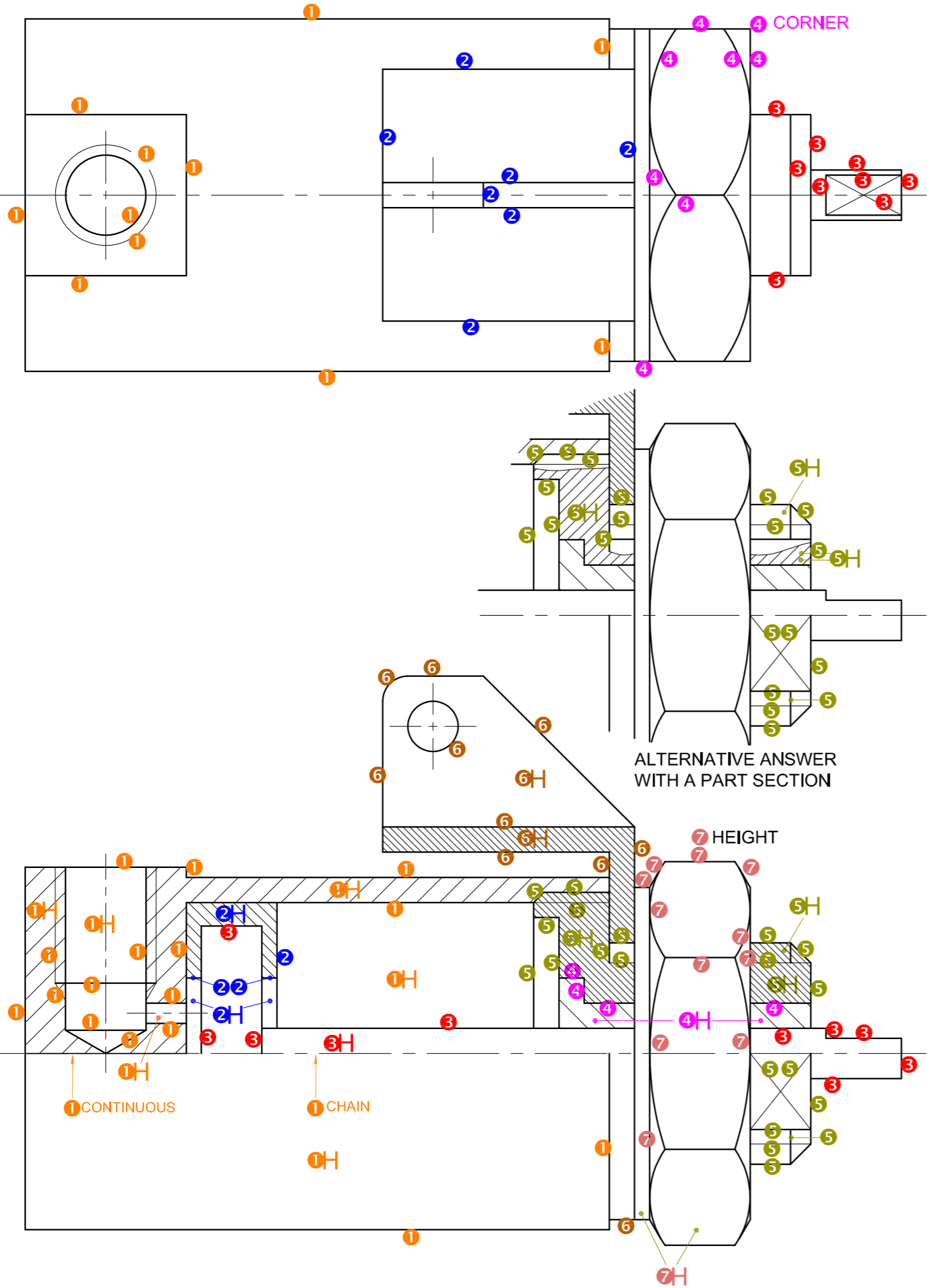
1	CYLINDER	5 $\frac{1}{2}$
2	BRACKET + HOOK	3 $\frac{1}{2}$
3	GUIDE + SHAFT	4 $\frac{1}{2}$
	M44 NUT + WASHER	4

SUBTOTAL17 $\frac{1}{2}$ **GENERAL**

1	CENTRE LINES	3
2	ASSEMBLY	8
3	WELDING SYMBOL	4

SUBTOTAL**15**

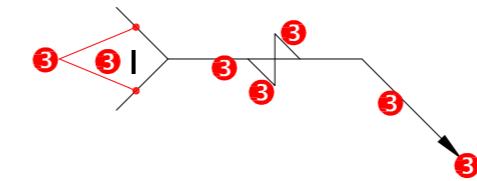
PAPER 2 QUESTION 4
GRADE 12
2021
MARKING GUIDELINE



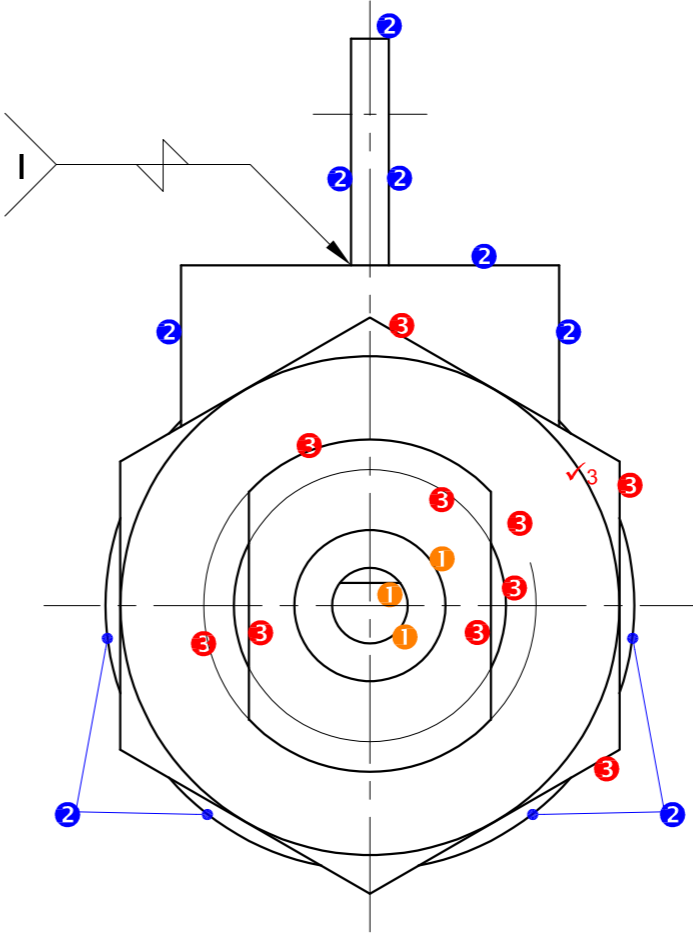
1. CENTRE LINE MARK ALLOCATION
SANS COMPLIANT (LINE TYPE) 1
7 CENTRE LINES (1 - 2 = 0, 3 - 5 = 1, 6 - 7 = 2) 2
TOTAL 3

2. ASSEMBLY
1 MARK FOR EVERY
COMPONENT CORRECTLY
ASSEMBLED (9 PARTS -1) = 8

PROPORTION 3



ALTERNATIVE ANSWER
WITH A PART SECTION



FOR OFFICIAL USE ONLY

INCORRECT OVERALL SCALE	
INCORRECT HATCHING	
PARTS NOT ASSEMBLED	
TOTAL PENALTIES (-)	

ASSESSMENT CRITERIA

RIGHT VIEW

		POSSIBLE	OBTAINED	SIGN	MODERATED
1	SHAFT + BUSH	1 1/2			
2	CYLINDER + BRACKET + HOOK	4			
3	M44 NUT + GUIDE	6			
SUBTOTAL		11 1/2			

HALF-SECTIONAL FRONT VIEW

1	CYLINDER	12			
2	RUBBER SEAL	2 1/2			
3	PLUNGER	5			
4	BUSH	2 1/2			
5	GUIDE	11 1/2			
6	BRACKET + HOOK	6			
7	M44 NUT + WASHER	6 1/2			
SUBTOTAL		46			

TOP VIEW

1	CYLINDER	5 1/2			
2	BRACKET + HOOK	3 1/2			
3	GUIDE + SHAFT	4 1/2			
4	M44 NUT + WASHER	4			
SUBTOTAL		17 1/2			

GENERAL

1	CENTRE LINES	3			
2	ASSEMBLY	8			
3	WELDING SYMBOL	4			
SUBTOTAL		15			
TOTAL		90			

PENALTIES (-)

GRAND TOTAL

EXAMINATION NUMBER

EXAMINATION NUMBER

6