

Need an amazing tutor?

www.teachme2.com/matric



Collected and collated by

teachme2



basic education

Department:
Basic Education
REPUBLIC OF SOUTH AFRICA

SENIOR CERTIFICATE EXAMINATIONS/ NATIONAL SENIOR CERTIFICATE EXAMINATIONS

ENGINEERING GRAPHICS AND DESIGN P1

2019

MARKING GUIDELINES

MARKS: 100

These marking guidelines consist of 8 pages.

APPROVED

UMALUSI MODERATOR: S. DE BRUIN

DBE IM: J VAN LEEUWEN

DBE CE: W GOODCHILD

ANSWERS		
1	VANESSA	1
2	108	1
3	YG/-2018	1
4	6 m	1
5	1,2 m	1
6	3	1
7	4	1
8	2500	1
9	RED	1
10	INSPECTION CHAMBER	1
11	RIVER	1
12	CONCRETE WALL	1
13	GULLY	1
14	CONTOUR HEIGHT/HEIGHT ABOVE SEA LEVEL	1
15	WATT/ELECTRICAL METER	1
16	12 m	1
17	SOUTH-WEST	2
18	68 m (formula 1, answer 1, decimal correct 1)	3
19	700 m ² (formula 1, answer 1, metre ² 1)	3
20	See below	6
TOTAL		30

ANSWER 18
Show ALL calculations.

$$\begin{aligned}
 &L+L+L+L+L+L \quad \checkmark \\
 &=9+21+4+4+5+25 \\
 &= 68 \text{ m} \quad \checkmark \checkmark
 \end{aligned}$$

ANSWER 19
Show ALL calculations.

$$\begin{aligned}
 &(L \times B) + \frac{1}{2}(B \times H) \quad \checkmark \\
 &=(20 \times 30) + \frac{1}{2}(20 \times 10) \\
 &=600 + 100 \\
 &= 700 \text{ m}^2 \quad \checkmark \checkmark
 \end{aligned}$$

ANSWER 20

ANSWER 20
MARK ALLOCATION

FREEHAND

FREEHAND

$\frac{1}{2}$

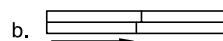
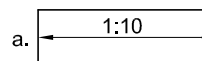
1. RAMP

- DOT $\frac{1}{2}$
- ARROW $\frac{1}{2}$
- GRADIENT (1 : 10) $\frac{1}{2}$
- DIRECTION 1

2. SLIDING DOOR

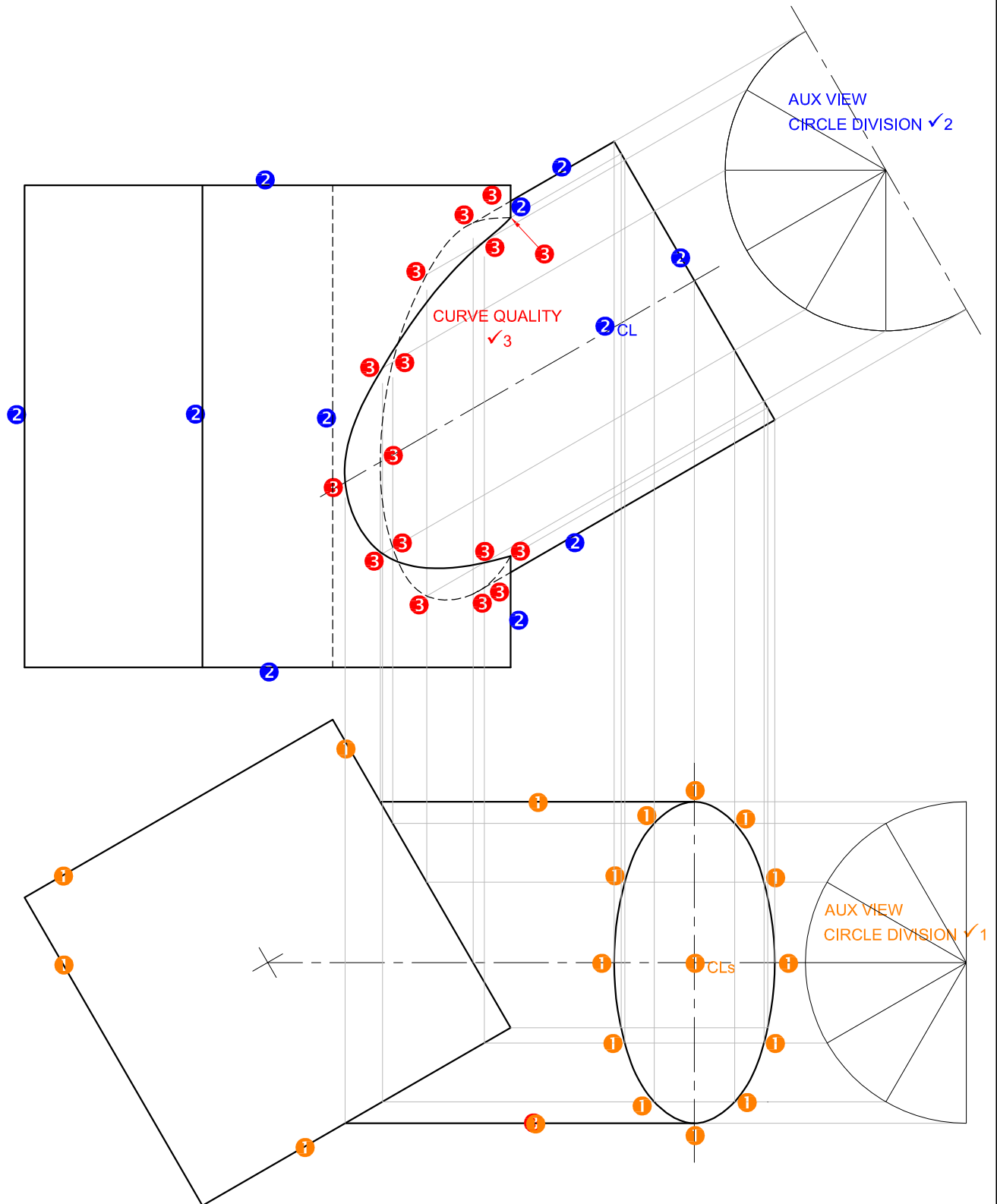
- RECTANGLE 1
- MIDDLE LINE $\frac{1}{2}$
- 2 OFFSET LINES 1
- ARROW $\frac{1}{2}$

TOTAL 6



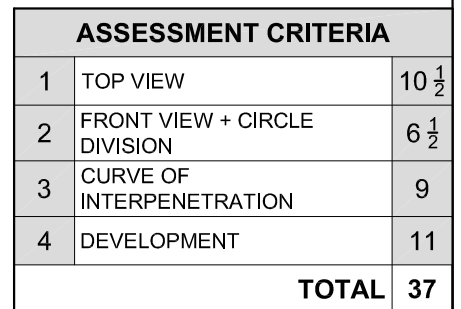
APPROVED

PAPER 1 QUESTION 1
GRADE 12
SC/NSC 2019
MARKING GUIDELINES

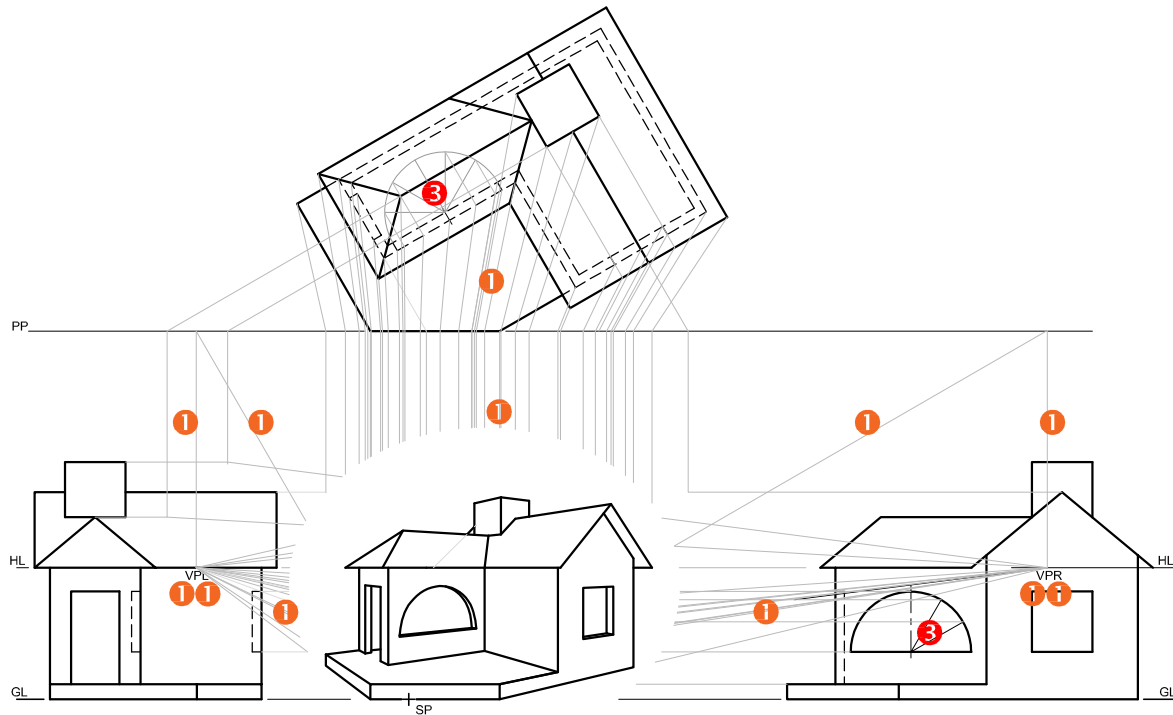


NOTE:
THE DEVELOPMENT AND
ASSESSMENT TABLE IS ON
PAGE 4

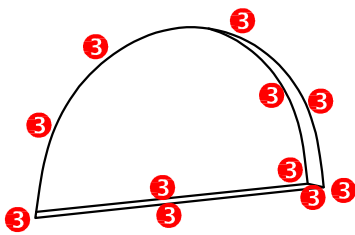
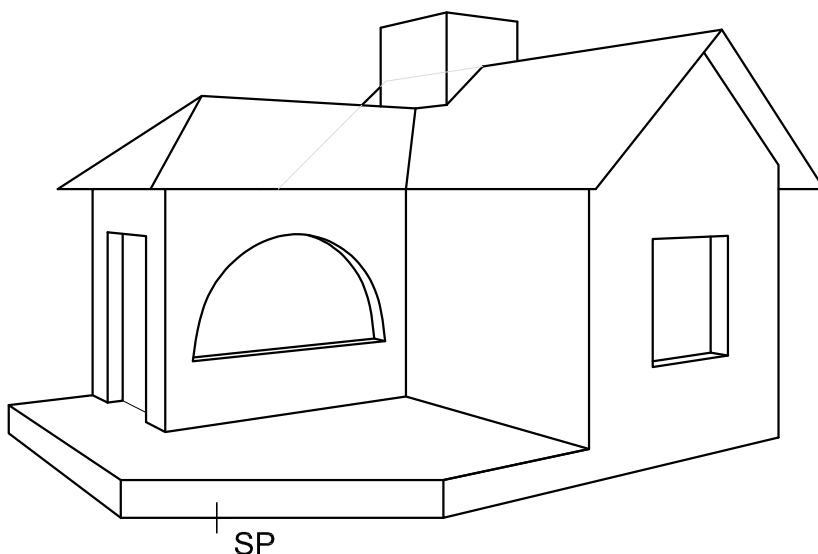
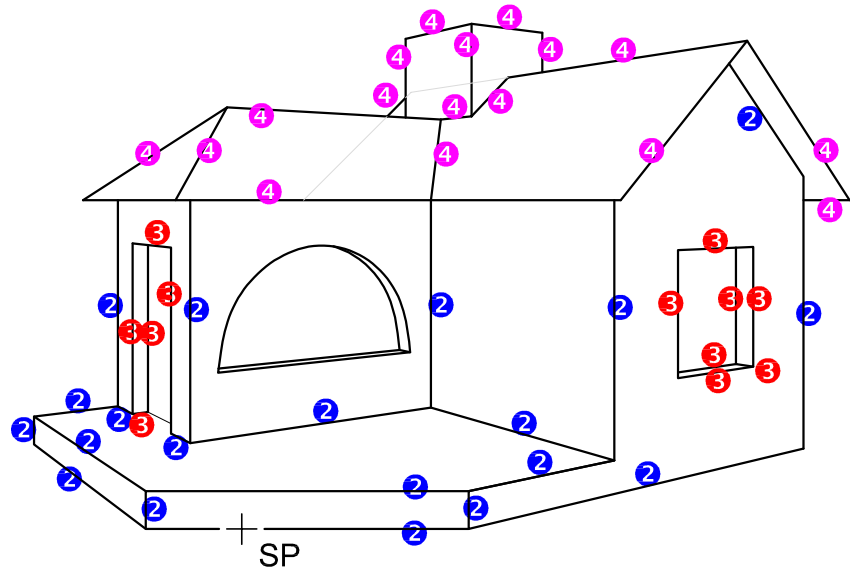
APPROVED
PAPER 1 QUESTION 2
GRADE 12
SC/NSC 2019
MARKING GUIDELINES



Please turn over



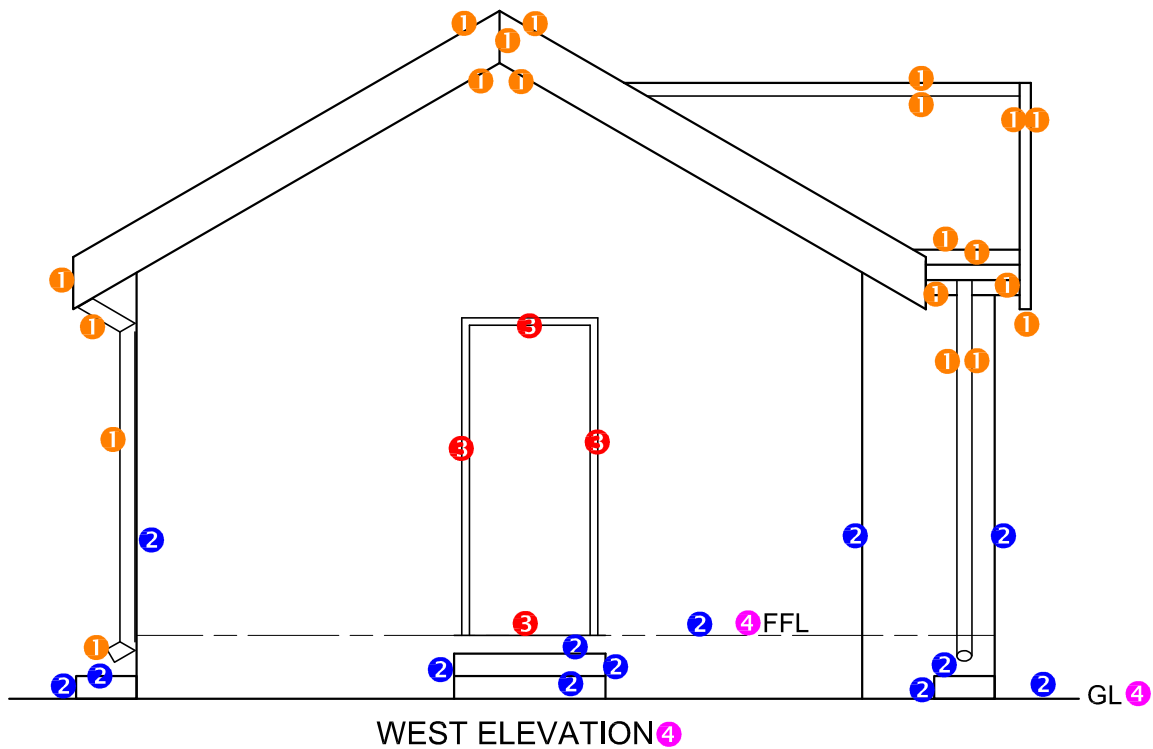
3✓ CURVE QUALITY

DETAILS OF THE
MARK ALLOCATION
FOR THE ARC**ASSESSMENT CRITERIA**

1	CONSTRUCTION	6
2	FLOOR AND WALLS	10
3	DOOR AND WINDOWS	13 $\frac{1}{2}$
4	ROOF	8 $\frac{1}{2}$
TOTAL		38

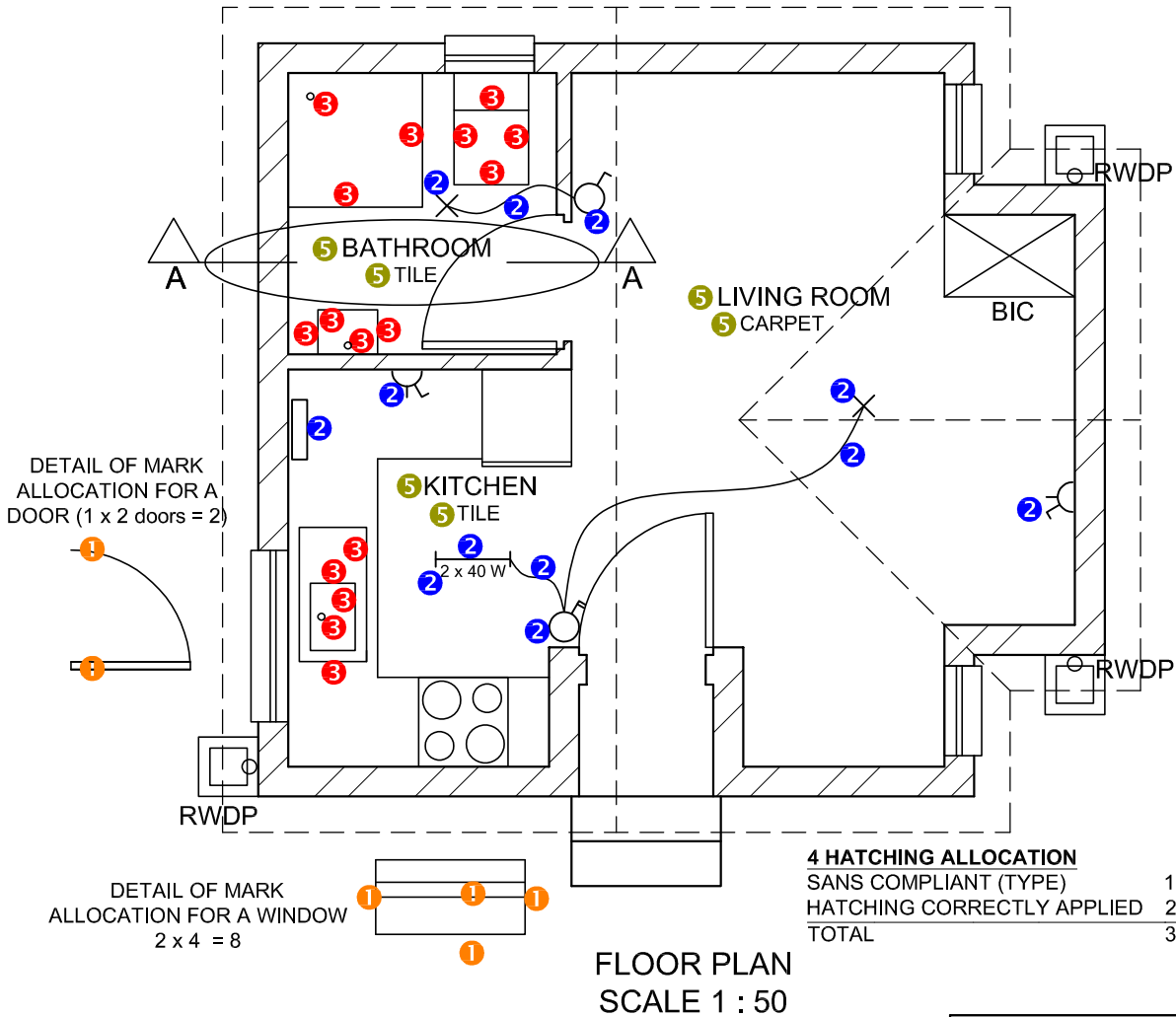
APPROVED

PAPER 1 QUESTION 3
GRADE 12
SC/NSC 2019
MARKING GUIDELINES



ASSESSMENT CRITERIA		
WEST ELEVATION		
1	ROOF + RWDP	10
2	WALLS + FFL	6 $\frac{1}{2}$
3	DOOR	2
4	LABELS	1 $\frac{1}{2}$
SUBTOTAL		20

APPROVED
 PAPER 1 QUESTION 4
 GRADE 12
 SC/NSC 2019
 MARKING GUIDELINES



ASSESSMENT CRITERIA		
FLOOR PLAN		
		POSSIBLE
1	DOORS + WINDOWS	10
2	ELECTRICAL	6
3	FIXTURES	8
4	HATCHING	3
5	LABELS	3
SUBTOTAL		30

APPROVED
PAPER 1 QUESTION 4
GRADE 12
SC/NSC 2019
MARKING GUIDELINES

MARK ALLOCATION FOR ROOF (1)

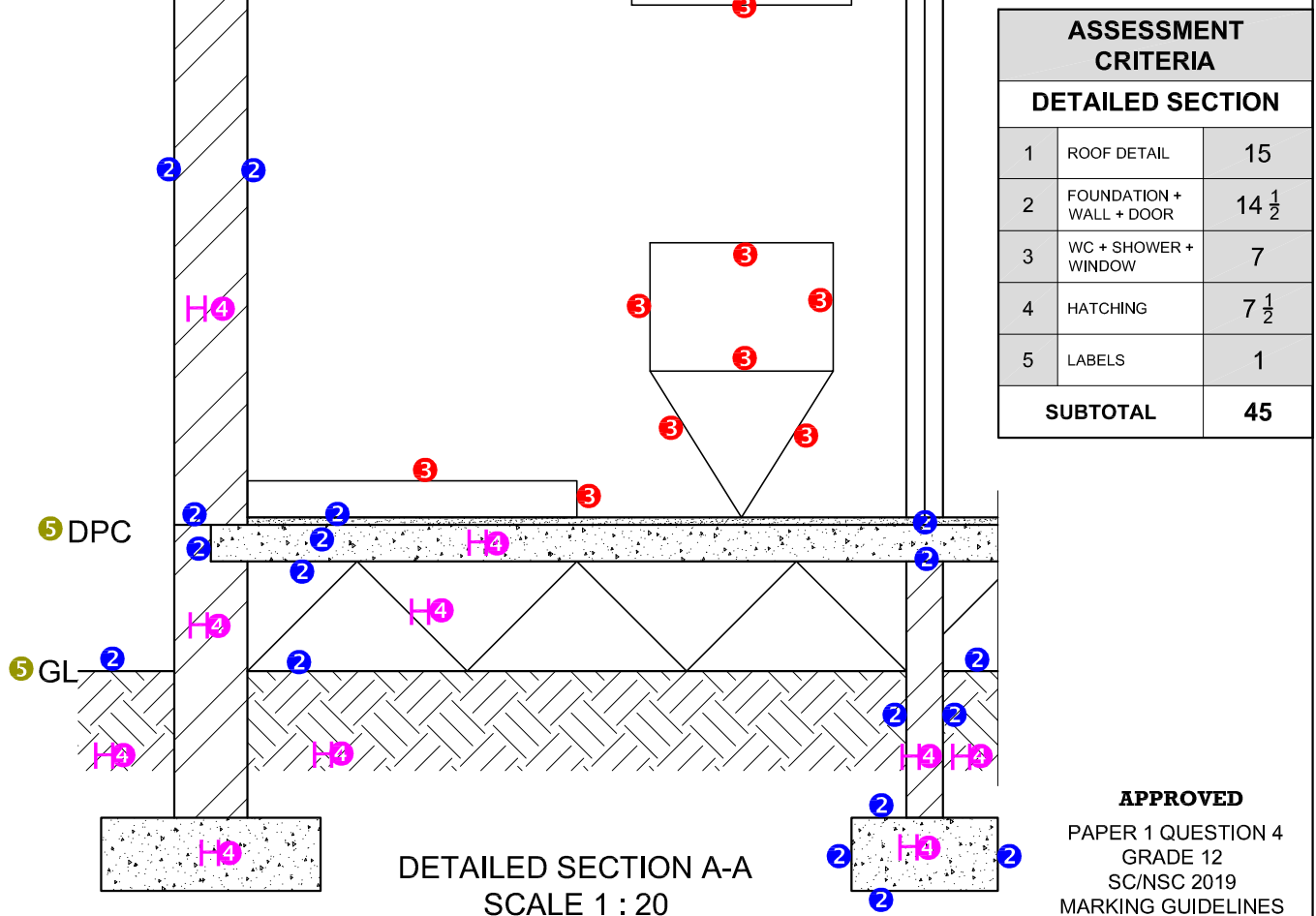
A: ROOF ANGLE	1
B: ROOF SHEET	1
C: PURLIN + SPACING	2
D: TRUSS + OVERHANG	5
E: FASCIA BOARD + GUTTER	2
F: BARGE BOARD	1
G: WALL PLATE	1
H: BRANDERING + SPACING	1
I: CEILING BOARD	1
TOTAL	15

4 TIMBER HATCHING ALLOCATION

SANS COMPLIANT (TYPE)

ALL TIMBER HATCHED

TOTAL

1
2
1
2
1**ASSESSMENT CRITERIA****DETAILED SECTION**

1	ROOF DETAIL	15
2	FOUNDATION + WALL + DOOR	14 $\frac{1}{2}$
3	WC + SHOWER + WINDOW	7
4	HATCHING	7 $\frac{1}{2}$
5	LABELS	1
SUBTOTAL		45

APPROVED

PAPER 1 QUESTION 4
GRADE 12
SC/NSC 2019
MARKING GUIDELINES