



basic education

Department:
Basic Education
REPUBLIC OF SOUTH AFRICA

**NASIONALE
SENIOR SERTIFIKAAT**

GRAAD 12

GEOGRAFIE V2

NOVEMBER 2021

PUNTE: 150

TYD: 3 uur

Hierdie vraestel bestaan uit 18 bladsye.

INSTRUKSIES EN INLIGTING

1. Hierdie vraestel bestaan uit TWEE AFDELINGS:

AFDELING A:
VRAAG 1: Landelike en Stedelike Nedersettings (60)
VRAAG 2: Ekonomiese Geografie van Suid-Afrika (60)

AFDELING B:
VRAAG 3: Geografiese vaardighede en Tegnieke (30)
2. Beantwoord al DRIE vrae.
3. ALLE diagramme is binne die VRAESTEL ingesluit.
4. Laat 'n reël oop tussen die onderafdelings van vrae beantwoord.
5. Begin ELKE vraag boaan 'n NUWE bladsy.
6. Nommer die antwoorde korrek volgens die nommeringstelsel wat in hierdie vraestel gebruik is.
7. MOENIE in die kantlyne van die ANTWOORDEBOEK skryf NIE.
8. Teken volledig benoemde diagramme wanneer dit vereis word.
9. Antwoord in VOLSINNE, behalwe waar jy moet noem, identifiseer of 'n lys moet maak.
10. Die maateenhede MOET in jou finale antwoord aangedui word, bv. 1 020 hPa, 14 °C en 45 m.
11. Jy mag 'n nieprogrammeerbare sakrekenaar gebruik.
12. Jy mag 'n vergrootglas gebruik.
13. Skryf netjies en leesbaar.

SPESIFIEKE INSTRUKSIES EN INLIGTING VIR AFDELING B

14. 'n 1 :50 000 topografiese kaart 2629DB van ERMELO en 'n 1 :10 000 ortofotokaart 2629 DB 5 van ERMELO word voorsien.
15. Die gebied wat met ROOI/SWART op die topografiese kaart afgebaken is, stel die gebied voor wat deur die ortofotokaart gedek word.
16. Toon ALLE berekeninge waar van toepassing. Punte sal hiervoor toegeken word.
17. Jy moet die topografiese kaart en die ortofotokaart aan die einde van hierdie eksamensessie by die toesighouer inlewer.

AFDELING A: LANDELIKE EN STEDELIKE NEDERSETTINGS EN DIE EKONOMIESE GEOGRAFIE VAN SUID-AFRIKA

VRAAG 1: LANDELIKE EN STEDELIKE NEDERSETTINGS

1.1 Verskeie opsies word as moontlike antwoorde op die volgende vrae gegee. Kies die antwoord en skryf slegs die letter (A–D) langs die vraagnommers (1.1.1 tot 1.1.8) in die ANTWOORDEBOEK neer, bv. 1.1.9 D.

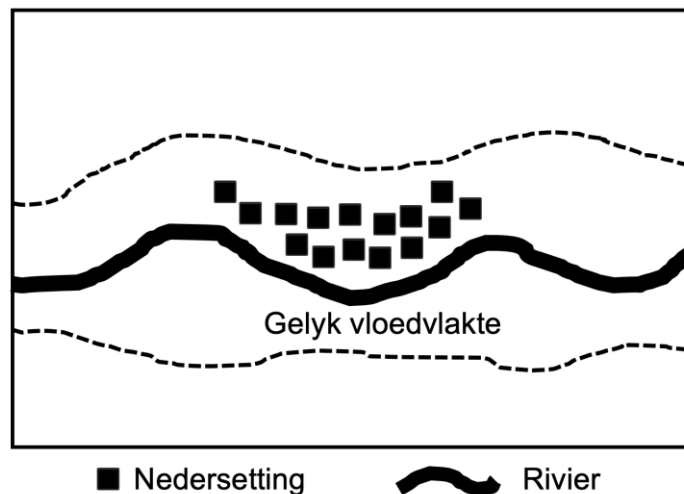
1.1.1 Daar word na die relatiewe ligging van een plek met betrekking tot 'n ander plek as ... verwys.

- A standplaas
- B relatiewe afstand
- C ligging
- D presiese ligging

1.1.2 Die ekonomiese sektor en ekonomiese funksie wat in landelike nedersettings domineer, kan as ... beskryf word.

- A primêr en enkelfunksioneel.
- B primêr en multifunksioneel
- C sekondêr en multifunksioneel
- D sekondêr en enkelfunksioneel

1.1.3 Die tipe nedersetting hieronder geïllustreer, is 'n ...

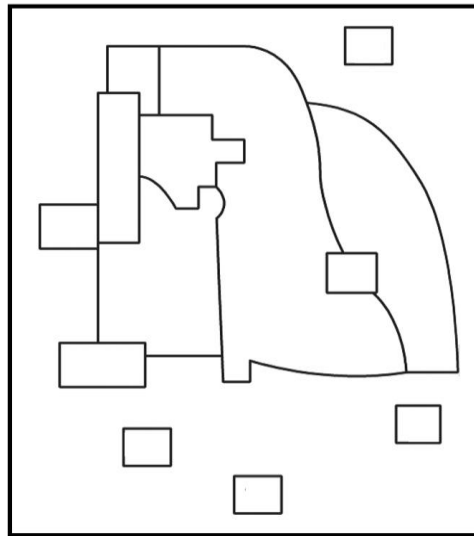


- A lineêre nedersetting.
- B droëpunte nedersetting.
- C verspreide nedersetting.
- D natpunte nedersetting.

1.1.4 Nedersettings langs die kus het gewoonlik 'n ...-vorm.

- A sirkel
- B kruis
- C halfsirkel
- D ster

1.1.5 Die grondgebruiksone-model hieronder kan as 'n veelvuldige kernmodel geïdentifiseer word omdat dit ... het.



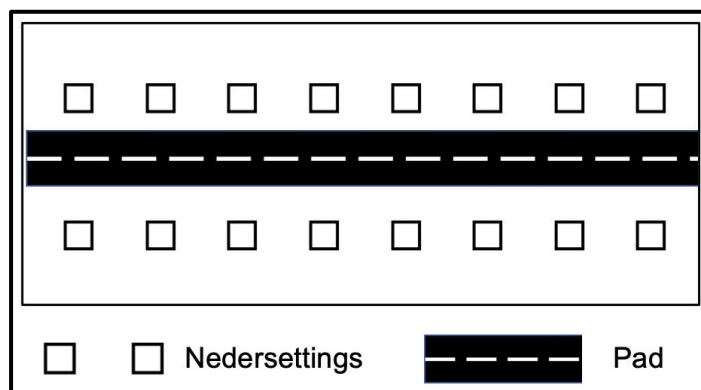
[Bron: Eksaminator se eie skets]

- A konsentriese sones
- B baie fokuspunte
- C baie wigpunte
- D een fokuspunt

1.1.6 Die ... verwys na die aantal mense wat nodig is vir 'n besigheid om 'n wins te maak.

- A drempelbevolking
- B invloedseer
- C reikwydte van goedere
- D stedelike hiërargie

1.1.7 Die stedelike gebied hieronder is ...



[Bron: Eksaminator se eie diagram]

- A stervormig.
- B lineêr gevorm.
- C kruisvormig.
- D sirkelvormig.

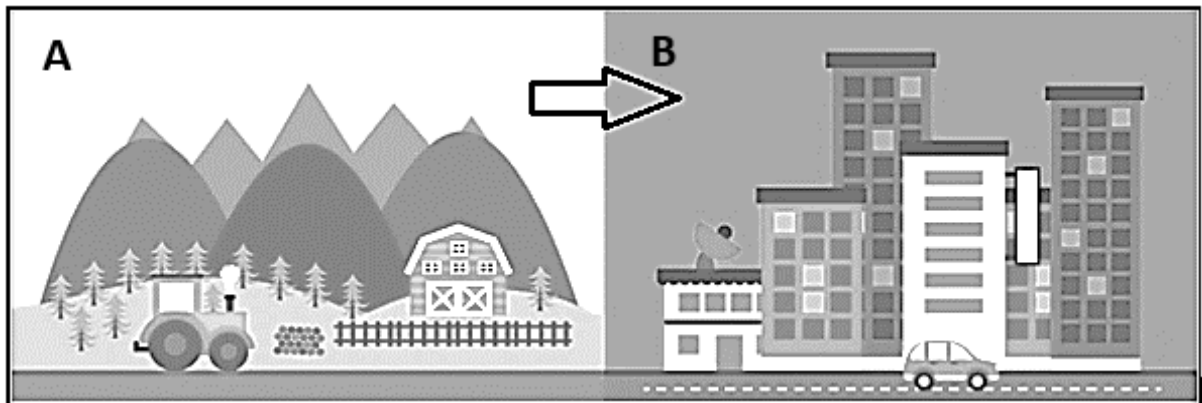
- 1.1.8 Verstedeliking verwys na die ...
- A afname in die aantal mense wat in landelike gebiede woon.
 - B fisiese groei van 'n stedelike gebied.
 - C persentasie waarmee die stedelike bevolkings toeneem.
 - D onbeheerde uitbreiding van stedelike gebiede. (8 x 1) (8)

- 1.2 Kies EEN term/konsep vir elk van die beskrywings oor die klassifikasie van nedersettings. Skryf slegs die term/konsep langs die vraagnommers (1.2.1 tot 1.2.7) in die ANTWOORDEBOEK neer, bv. 1.2.8 groot stad.

gehuggie; dorp; megalopolis; geïsoleerde plaasopstal; konurbasie; klein dorpie; stad; metropool
--

- 1.2.1 'n Nedersetting wat die kleinste in 'n hiërargie is
- 1.2.2 'n Nedersetting wat 'n aaneenlopende stedelike area is en uit dorpe en stede bestaan/saamgestel is
- 1.2.3 'n Nedersetting wat uit 'n los groepering van 'n paar plaasopstalle bestaan
- 1.2.4 'n Nedersetting wat uit 'n groot stad en satellietdorpe bestaan
- 1.2.5 'n Nedersetting wat 'n groot verskeidenheid dienste en gespesialiseerde funksies bied
- 1.2.6 'n Klein stedelike nedersetting wat stedelike funksies aan die omliggende landelike area bied
- 1.2.7 'n Nedersetting wat uit baie konurbasies bestaan (7 x 1) (7)

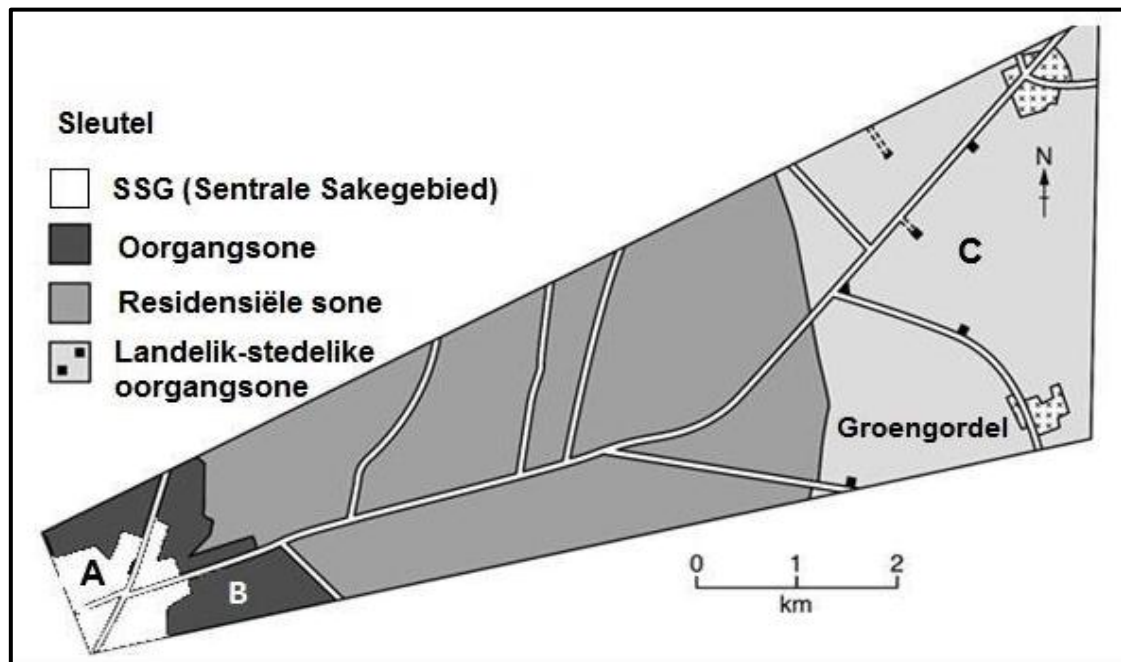
1.3 Verwys na die skets wat landelik-stedelike migrasie toon.



[Bron: <https://www.sspcr.eurac.edu/2019/07/03/special-session-on-rural-urban-relationships-for-a-better-territorial-development/>]

- 1.3.1 Noem 'n omgewingsfaktor wat die beweging van mense van **A** na **B** veroorsaak. (1 x 1) (1)
- 1.3.2 Hoe gee landelik-stedelike migrasie aanleiding tot landelike ontvolking? (1 x 2) (2)
- 1.3.3 Wat is die negatiewe ekonomiese impak van landelik-stedelike migrasie op nedersetting **A**? (2 x 2) (4)
- 1.3.4 In 'n paragraaf van ongeveer AGT reëls, verduidelik hoekom landelike migrante dit moeilik vind om in gebied **B** werk te kry en die impak hiervan op hulle lewensgehalte. (4 x 2) (8)

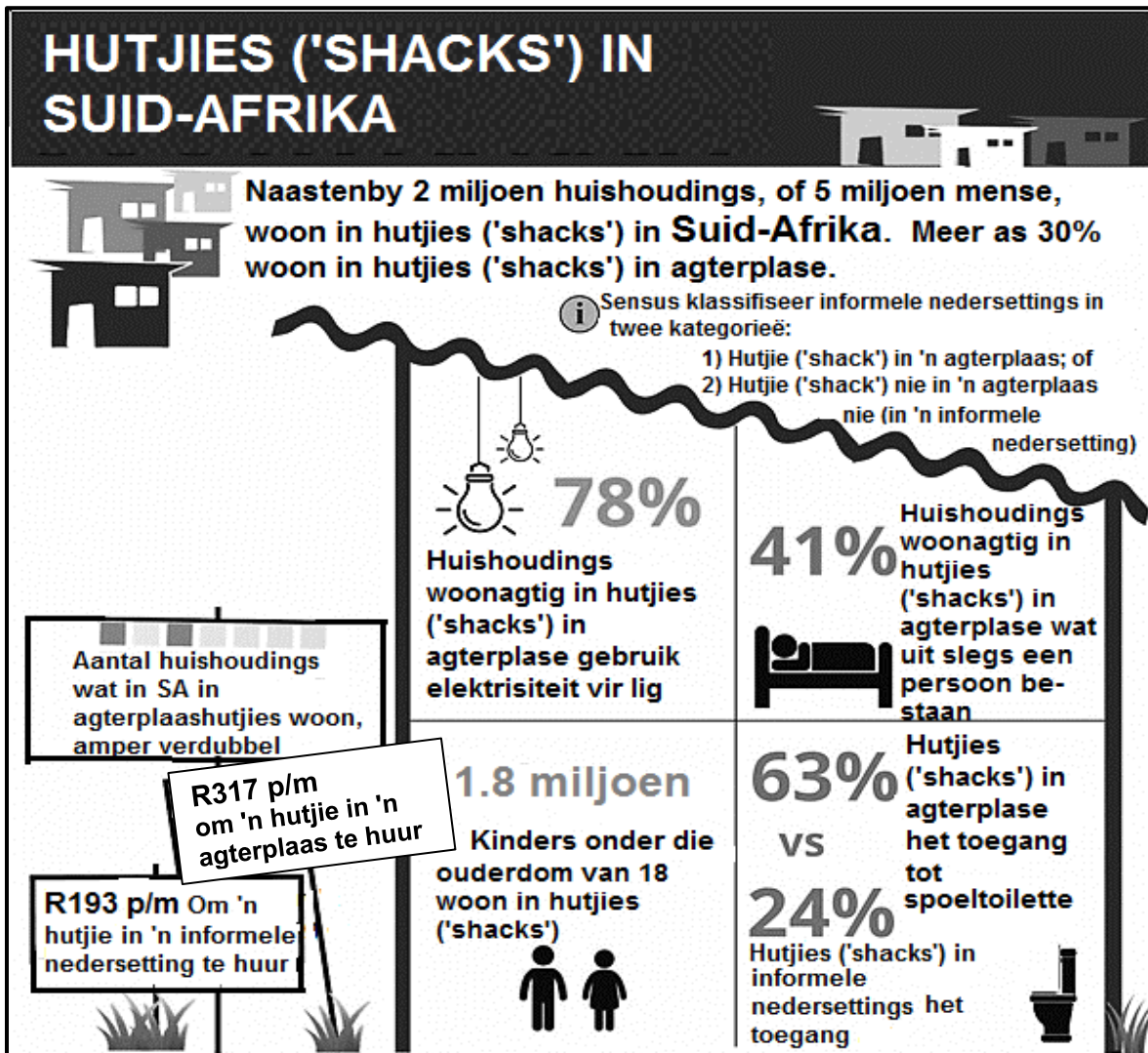
1.4 Verwys na die deursnit oor stedelike grondgebruiksone.



[Bron: Aangepas uit <https://www.google.com/search?q=land-use/>]

- 1.4.1 Identifiseer die grondgebruiksone by **A**. (1 x 1) (1)
- 1.4.2 Hoe sal die afnemende toeganklikheid na grondgebruiksone **A**, pendelaars negatief beïnvloed? (1 x 2) (2)
- 1.4.3 Gee TWEE redes vir die onreëlmatige vorm van die grondgebruiksone by **B**. (2 x 2) (4)
- 1.4.4 Waarom is geboue by grondgebruiksone **B** in 'n verval (swak) toestand? (2 x 2) (4)
- 1.4.5 Waarom sal nuwe, hoë-inkomste residensiële ontwikkelings deur area **C** aangetrek word? (2 x 2) (4)

1.5 Verwys na die infografika oor informele nedersettings.



[Bron: <https://www.google.com/search?q=infographic+shack+dwellers&tbm=isch&ved>]

- 1.5.1 Hoeveel mense in Suid-Afrika woon in hutjies ('shacks'), volgens die infografika? (1 x 1) (1)
- 1.5.2 Noem TWEE voordele daarvan om in 'n agterplaashutjie te woon in vergelyking met 'n informele nedersetting, volgens die infografika. (2 x 1) (2)
- 1.5.3 Waarom verkies 'n groter aantal mense steeds om in informele nedersettings te woon in vergelyking met agterplaashutjies? (1 x 2) (2)
- 1.5.4 Hoe verhoog die boumateriaal van informele nedersettings die kwesbaarheid (groter risiko) vir uiterste weerstoestande? (1 x 2) (2)
- 1.5.5 Identifiseer en verduidelik EEN maatskaplike kwessie wat ontwikkel het as gevolg van die groei van informele nedersettings. (2 x 2) (4)
- 1.5.6 Hoe kan plaaslike munisipaliteite die uitdagings geassosieer met die groei van informele nedersettings, verminder? (2 x 2) (4)

[60]

VRAAG 2: EKONOMIESE GEOGRAFIE VAN SUID-AFRIKA

- 2.1 Die foto's hieronder toon TWEE tipes boerdery. Pas die beskrywings in VRAAG 2.1.1 tot 2.1.7 by foto **A** of **B**. Skryf slegs die letter (**A** of **B**) langs die vraagnommers (2.1.1 tot 2.1.7) in die ANTWOORDEBOEK neer, bv. 2.1.8 B.



- 2.1.1 Boerdery wat 'n lae opbrengs per hektaar lewer
- 2.1.2 Boerdery wat op voedselsekerheid in plaaslike gemeenskappe fokus
- 2.1.3 Boerdery wat kapitaal-intensief is en gevorderde tegnologie gebruik
- 2.1.4 Boerdery wat met monokultuur geassosieer word
- 2.1.5 Boerdery wat as kleinskaalse boerdery beskryf word
- 2.1.6 Produkte vir tuis- en uitvoermark
- 2.1.7 Word met grootskaalse boerderypraktyke geassosieer (7 x 1) (7)

2.2 Verskeie opsies word as moontlike antwoorde op die volgende vrae gegee. Kies die antwoord en skryf slegs die letter (A–D) langs die vraagnommers (2.1.1 tot 2.1.8) in die ANTWOORDEBOEK neer, bv. 2.2.9 D.

2.2.1 Die BBP is die totale waarde van ...

- A goedere en dienste wat in een jaar in 'n land geproduseer word.
- B goedere en dienste wat in een jaar deur permanente burgers geproduseer word.
- C uitvoere wat in een jaar die land verlaat.
- D invoere wat in een jaar die land binnekom.

2.2.2 Die konsep ... word gebruik om te verwys na produkte wat in Suid-Afrika verkoop word.

- A uitvoermark
- B invoermark
- C tuismark
- D internasionale mark

2.2.3 Voedselsekerheid vind plaas wanneer ...

- A daar 'n tekort aan voedsel is wat hongersnood veroorsaak.
- B daar toegang tot voldoende voedsame voedsel is.
- C boere droogte en gewasbesmetting (siektes) ervaar.
- D boere voldoende voedsel produseer.

2.2.4 ... is 'n fisiese faktor wat voedselsekerheid in Suid-Afrika beïnvloed.

- A Navorsing
- B Handel
- C MIV/Vigs
- D Reënval

2.2.5 TWEE tipes nywerhede wat met massavervoer geassosieer word:

- (i) Alomteenwoordig
- (ii) Swaar
- (iii) Lig
- (iv) Grondstof-georiënteerd

- A (i) en (iii)
- B (ii) en (iv)
- C (ii) en (iii)
- D (i) en (iv)

2.2.6 TWEE tipes nywerhede wat oor die algemeen met laer vlakke van lugbesoedeling geassosieer word:

- (i) Alomteenwoordig
- (ii) Swaar
- (iii) Lig
- (iv) Grondstof-georiënteerd

- A (i) en (ii)
- B (ii) en (iii)
- C (i) en (iii)
- D (ii) en (iv)

2.2.7 ... is 'n voorbeeld van 'n tersiêre aktiwiteit.

- A Mynbou
- B Motorvoertuigmontering
- C Vervoer
- D Inligtingstegnologie

2.2.8 ... verwys na die verskil in waarde tussen invoere en uitvoere.

- A Handelsooreenkoms
- B Handelsbalans
- C Plaaslike handel
- D Internasionale handel

(8 x 1) (8)

2.3 Verwys na die uittreksel oor steenkoolmynbou in Suid-Afrika.



- 2.3.1 Met hoeveel het beleggings in steenkool sedert 2010 verminder, volgens die Mineraalraad van Suid-Afrika? (1 x 1) (1)
- 2.3.2 Volgens die grafiek, oor watter TWEE-jaar-periode is die grootste afname in produksie aangeteken? (1 x 2) (2)
- 2.3.3 Hoe veroorsaak die ligging van die steenkoolmyne in Mpumalanga 'n toename in die uitvoerkoste van steenkool? (1 x 2) (2)

2.3.4 Ten spyte van Mpumalanga se ryk steenkoolreserwes, staan die steenkoolbedryf voor 'n donker toekoms. Haal redes uit die uittreksel aan vir hierdie donker toekoms. (2 x 2) (4)

2.3.5 Verduidelik hoe die afname in die ontginning van steenkool 'n negatiewe ekonomiese impak op Mpumalanga sal hê. (3 x 2) (6)

2.4 Verwys na die infografika oor die Suidwestelike Kaapse kernnywerheidsgebied en die Weskus Ruimtelike Ontwikkelingsinisiatief (ROI).



2.4.1 Haal bewyse uit die infografika aan wat toon dat die Suidwestelike Kaapse kernnywerheidsgebied tot die Suid-Afrikaanse ekonomie bydra. (1 x 1) (1)

- 2.4.2 Noem TWEE vervoermiddele in die infografika wat die Suidwestelike Kaapse kernnywerheidsgebied vir buitelandse beleggers aantreklik/aanloklik maak. (2 x 1) (2)
- 2.4.3 Die Suidwestelike Kaapse kernnywerheidsgebied word deur ligte nywerhede oorheers.
- (a) Waarom ondersteun die Suidwestelike Kaapse kernnywerheidsgebied die ontwikkeling van ligte nywerhede?(2 x 2) (4)
- (b) Gee TWEE faktore wat die ontwikkeling van swaar nywerhede in die Suidwestelike Kaapse kernnywerheidsgebied beperk het. (2 x 2) (4)
- 2.4.4 Verduidelik hoe die Weskus Ruimtelike Ontwikkelingsinisiatief (ROI) verhoogde toegang tot internasionale markte vir die Suidwestelike Kaapse kernnywerheidsgebied skep. (2 x 2) (4)
- 2.5 Verwys na die uittreksel wat op die informele sektor gebaseer is.

INFORMELE SEKTOR IN 'N HAGLIKE TOESTAND; DRA EGTER MILJARDE TOT DIE EKONOMIE BY

Regering- en besigheidsingrypings gedurende die krisis het hoofsaaklik op die formele ekonomie gefokus; sodoende is die informele sektor geïgnoreer en is die kwesbaarste mense in die samelewing weerloos gelaat.



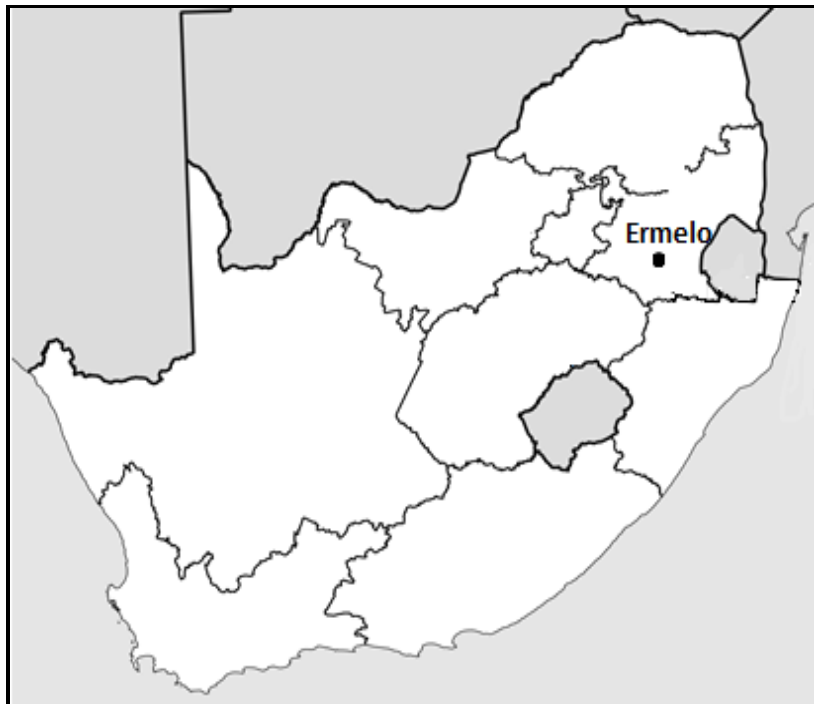
Voorbeelde sluit in kos- en vlooiemarkte, straatverkopers en wasserye, meestal in landelike en informele nedersettings. Dit word as informeel beskou aangesien dit selde op nasionale of streeksvlak geregistreer is, kontant-gebaseer is en dus nie belasting betaal nie, en gewoonlik nie 'n formele ooreenkoms met werknemers het nie.

Die informele sektor staan ook as die 'skadu'-ekonomie bekend en dus word dit oorgesien of nie gunstig oorweeg gedurende beleidsformulering nie. Dit word dikwels in besigheidstrategieë geringgeskat en maklik met korrupsie vereenselwig.

[Bron: <https://www.mosselbayadvertiser.com/News/Article/National/informal-sector-in-dire-situation-yet-contributes-billions-to-economy-202004241043>]

- 2.5.1 Definieer die konsep *informele sektor*. (1 x 2) (2)
- 2.5.2 Gee 'n voorbeeld van 'n informele aktiwiteit in die uittreksel. (1 x 1) (1)
- 2.5.3 Waarom word die informele sektor as deel van 'n 'skadu'-ekonomie beskou? Haal uit die uittreksel aan. (2 x 2) (4)
- 2.5.4 In 'n paragraaf van ongeveer AGT reëls, stel volhoubare strategieë voor wat die regering en besighede kan implementeer om die informele sektor te versterk. (4 x 2) (8)

[60]

AFDELING B**VRAAG 3: GEOGRAFIESE VAARDIGHEDE EN TEGNIEKE****AGTERGRONDINLIGTING OOR ERMELO**

Koördinate: 26°31'S ; 29°58'O

Ermelo is 'n opvoedkundige, nywerheids- en kommersiële dorp in die 7,750 km² Gert Sibande Distrik Munisipaliteit in Mpumalanga, Suid-Afrika. Dit is 210 km oos van Johannesburg geleë. Dit is beide 'n landbou- en mynboustreek. Gemengde boerdery, soos mielie- en veeboerdery, vind in die distrik plaas. Mynbou is belangrik vir die distrik met antrasiet, steenkool en torbaniet wat gemyn word.

[Bron: https://en.wikipedia.org/wiki/Ermelo,_Mpumalanga]

Die volgende Engelse terme en hul Afrikaanse vertalings word op die topografiese kaart getoon:

ENGLISH

Diggings
River
Sewerage works
Opencast mine
Prison
Purification Plant

AFRIKAANS

Uitgrawings
Rivier
Rioolwerke
Oopgroefmyn
Tronk
Suiweringsaanleg

3.1 **KAARTVAARDIGHEDE EN BEWERKINGS**

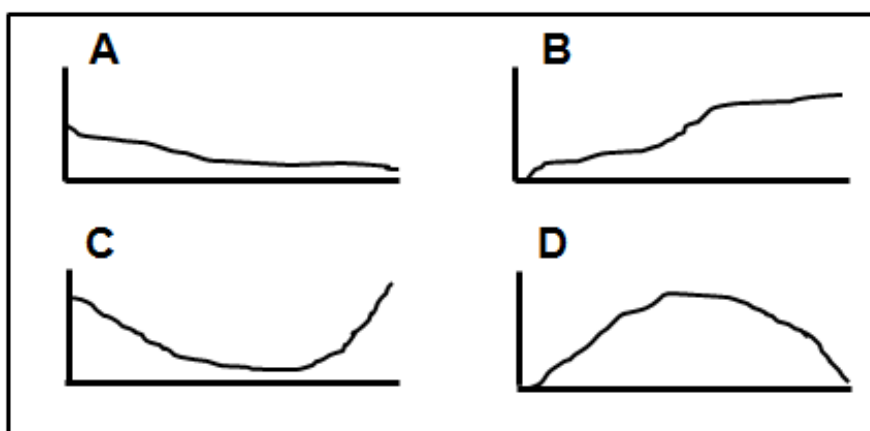
3.1.1 Die dorp wat per spoor die naaste aan Ermelo is, is ...

- A Breyton.
- B Camden.
- C Chrissiesmeer.
- D Piet Retief

(1 x 1) (1)

Verwys na punthoogte 1738, **F** in blok **B1** en die windpomp, **G** in blok **B3** op die topografiese kaart.

3.1.2 Die vryhand deursnit tussen punthoogte 1738 en die windpomp is ...



(1 x 1) (1)

3.1.3 Gee 'n rede vir die intersigbaarheid tussen punthoogte 1738 en die windpomp. (1 x 2) (2)

3.1.4 Wat is die verskil in hoogte tussen punthoogte 1738 en die windpomp? (1 x 1) (1)

3.1.5 Bereken die afstand tussen punthoogte 1738 en die windpomp in meter.

Formule: **Werklike afstand = Kaartafstand x Kaartskaal**

(2 x 1) (2)

3.1.6 Gebruik die antwoorde op VRAAG 3.1.4 en 3.1.5 om die gemiddelde gradiënt tussen punthoogte 1738 en die windpomp te bereken.

Formule: **Gemiddelde gradiënt = $\frac{\text{Vertikale interval (VI)}}{\text{Horisontale ekwivalent (HE)}}$**

(2 x 1) (2)

3.1.7 Bepaal die verskynsel wat by die volgende koördinaatverwysing geleë is:

26°31'54"S;29°57'25"O

(1 x 1) (1)

3.2 KAARTINTERPRETASIE

Verwys na die rioolwerke, **J** in blok **A3**, op die topografiese kaart.

- 3.2.1 Die rioolwerke is geleë in die ...
- A oorgangsonesone.
 - B landelik-stedelike oorgangsonesone.
 - C kommersiële sone.
 - D nywerheidsone. (1 x 1) (1)
- 3.2.2 Wesselton is 'n residensiële gebied wat naby die rioolwerke geleë is. Hoekom verlaag die ligging van die rioolwerke die eiendomswaarde van Wesselton? (1 x 2) (2)

Verwys na straatpatrone (planne) **H** en **I** op die topografiese kaart.

- 3.2.3 Identifiseer straatpatrone (planne) **H** en **I**. (2 x 1) (2)
- 3.2.4 Waarom is straatpatroon (plan) **I** nie meer gewild in nuwe ontwikkelings nie? (1 x 2) (2)

Verwys na die hospitaal **6** in blok **E5** op die ortofotokaart.

- 3.2.5 Die hoof ekonomiese aktiwiteit by **6** in blok **E5** op die ortofotokaart is (sekondêr/tersiêr). (1 x 1) (1)
- 3.2.6 Verduidelik waarom area **6** vir die ontwikkeling van die ekonomiese aktiwiteit wat in VRAAG 3.2.5 geïdentifiseer is, geskik was. (1 x 2) (2)

Verwys na blok **D1** en **E1** op die topografiese kaart.

- 3.2.7 Hoe het die oopgroefmyn in blok **D1** en **E1** op die topografiese kaart 'n omgewingsongeregtigheid veroorsaak? (1 x 2) (2)

3.3 GEOGRAFIESE INLIGTINGSTELSELS (GIS)

Verwys na die ruimtelike voorwerpe in blok **D1** en **E1** op die topografiese kaart.

Gee 'n voorbeeld van die volgende:

- | | | | |
|-------|------------------------------------|---------|-----|
| 3.3.1 | 'n Natuurlike lynverskynsel | (1 x 1) | (1) |
| 3.3.2 | 'n Mensgemaakte poligoonverskynsel | (1 x 1) | (1) |

Verwys na die beeld (wat deur middel van afstandswaarneming geneem is), van die oopgroefmyn wat in blok **D1** en **E1** op die topografiese kaart te sien is.



[Bron: <https://live-production.wcms.abcnet.au/331aa383528239df7238f20fc4a225b9?>]

- | | | | |
|-------|---|---------|-----|
| 3.3.3 | Definieer die konsep <i>afstandswaarneming</i> . | (1 x 2) | (2) |
| 3.3.4 | Gee EEN sigbare attribuut van die oopgroefmyn deur na blok D1 en E1 op die topografiese kaart en die beeld hierbo te verwys. | (1 x 2) | (2) |
| 3.3.5 | Verduidelik hoe hierdie beeld van die oopgroefmyn meer effektief sal wees om die omgewingsongeregtigheid te assesser as om die topografiese kaart te gebruik. | (1 x 2) | (2) |

[30]

TOTAAL: 150



basic education

Department:
Basic Education
REPUBLIC OF SOUTH AFRICA

**NATIONAL
SENIOR CERTIFICATE**

GRADE 12

**GEOGRAPHY P2
NOVEMBER 2021
MARKING GUIDELINES**

MARKS: 150

These marking guidelines consist of 13 pages.

SECTION A**QUESTION 1: RURAL AND URBAN SETTLEMENTS**

- | | | | |
|-----|-------|------------------------|-------------|
| 1.1 | 1.1.1 | C (1) | |
| | 1.1.2 | A (1) | |
| | 1.1.3 | D (1) | |
| | 1.1.4 | C (1) | |
| | 1.1.5 | B (1) | |
| | 1.1.6 | A (1) | |
| | 1.1.7 | B (1) | |
| | 1.1.8 | C (1) | (8 x 1) (8) |
| 1.2 | 1.2.1 | Isolated farmstead (1) | |
| | 1.2.2 | Conurbation (1) | |
| | 1.2.3 | Hamlet (1) | |
| | 1.2.4 | Metropolis (1) | |
| | 1.2.5 | City (1) | |
| | 1.2.6 | Town (1) | |
| | 1.2.7 | Megalopolis (1) | (7 x 1) (7) |

- 1.3 1.3.1 Natural hazards(disasters)/droughts/floods/veld fires (1)
STATE IN AN ENVIRONMENT FACTOR Soil erosion/infertile soil/land degradation/desertification (1)
 Erratic weather patterns/unreliable rainfall (1)
 Crop and livestock diseases/parasites and pests (1)
[ANY ONE] (1 x 1) (1)
- 1.3.2 It decreases the number of people in the rural areas (2)
HOW DOES RURAL MIGRATION RESULT IN RURAL DEPOP? People leaving the rural areas increases rural depopulation (2)
[ANY ONE] (1 x 2) (2)
- 1.3.3 Fewer customers (2)
NEGATIVE ECONOMIC IMPACT OF RURAL-URBAN MIGRATION ON SETT A Decrease in spending power (2)
 Businesses close down/ Ghost towns (2)
 Reduction of working hours (2)
 Fewer job opportunities (2)
 Less money for provision/maintenance of services (accept examples) (2)
 Decrease in investment (2)
 Decreased labour supply (2)
 Leads to a decline in production (2)
 Decrease in value of property (2)
 Shortage of skills (2)
 Farmland left unattended/ uneconomical (2)
[ANY TWO] (2 x 2) (4)
- 1.3.4 They do not have the necessary documentation required to be registered as
PARAGRAPH EXPLAIN WHY RURAL MIGRANTS EXPERIENCE DIFFICULTY IN FINDING EMPLOYMENT AND IMPACT THEREOF an employee therefore cannot afford basic services (can give examples) (2)
 They are not qualified/Do not have the skills required for the jobs available in
 urban areas which results in an increase in poverty levels (2)
 Limited employment opportunities available in urban area and as such are
 forced to live in informal settlements (2)
 Rural migrants do not have money for transportation to look for jobs and will
 not be able to buy basic foods (2)
 Lack of education (lack of schooling) results in limited access to health
 services (2)
 Lack of experience which results in an increase in poverty levels (2)
[ANY FOUR. CANDIDATES MUST REFER TO BOTH DIFFICULTY IN FINDING EMPLOYMENT AND HOW IT IMPACTS ON THE QUALITY OF LIFE] (4 x 2) (8)

1.4	1.4.1	CBD (Central Business District) (1)	(1 x 1) (1)
	1.4.2	Traffic delays/traffic congestion (2) Time wasted/ not on time (2) Loss of jobs/loss of income (2) Increase in stress levels/ road rage (2) High fuel costs/ increase cost of transport/ increase cost of parking (2) Lack of parking/commuters walk to work (2) Increase in accidents (2) More fines due to not obeying the traffic rules (2) High vehicle maintenance costs (2) [ANY ONE]	(1 x 2) (2)
	1.4.3	CBD/A is expanding into the transition zone in some areas/invasion and succession (2) Irregular expansion of the residential zone into the transition zone (2) CBD/A is irregular in shape (2) The residential area is irregular in shape (2) [ANY TWO]	(2 x 2) (4)
	1.4.4	Buildings abandoned (2) No maintenance/landlords/tenants neglect buildings (2) Low rentals result in limited capital to maintain buildings (2) Buildings are vandalised/graffiti on walls (2) Homeless people move into abandoned buildings (2) Low owner occupancy (2) Illegal occupation of buildings (2) Changing functions of buildings (2) Lack of service delivery by municipalities (2) Social ills commonly occur (2) Overcrowding in rental units (2) [ANY TWO]	(2 x 2) (4)
	1.4.5	Open space (2) Presence of greenbelt/ aesthetic appeal (2) Peace and tranquility (2) Accessibility to A /existing infrastructure (2) Less pollution (2) Cheaper land (2) More security/less crime (2) Less traffic congestion (2) [ANY TWO]	(2 x 2) (4)

HOW WOULD DECREASING ACCESSIBILITY NEGATIVE IMPACT COMMUTERS?

GIVE TWO REASONS FOR IRREGULAR SHAPE OF B

WHY ARE BUILDINGS IN A DILAPIDATED STATE?

WHY WILL NEW HIGH-INCOME DEVELOP BE ATTRACTED TO C?

1.5	1.5.1	5 million (1)	(1 x 1) (1)
	1.5.2	Access to electricity (1) Access to flush toilets (1) Low occupancy/ one person only (1) [ANY TWO]	(2 x 1) (2)
	1.5.3	Cheaper to live in informal settlements/ Lower rental cost (2) Less restrictions in the informal settlements (2) Access to illegal connections (2) Easier to get on low cost housing lists (2) Access to more informal economic activities (2) Potential to extend your shack (2) [ANY ONE- MAY ANSWER FROM THE PERSPECTIVE OF THE BACKYARD SHACK] (2)	(1 x 2)
	1.5.4	Poor quality building materials provide limited protection (accept examples) (2) (1 x 2) (2)	(2)
	1.5.5	<ul style="list-style-type: none"> • Limited access to basic services (accept examples) (2) due to greater demand (2) • Increase in health problems (accept examples) (2) due to high levels of pollution (2)/due to overcrowding (2) • Limited access to education/health services (2) due to a large concentration of people (2) • Increase in crime (2) due to increased levels of unemployment (2) • Decrease in aesthetic appeal (2) due to lack of planning/conditions of informal settlements (2) • Increased food insecurity (2) due lack of income (2) • Overcrowding (2) due to lack of space for settlement/planning (2) • Increase in poverty (2) due to high rate of unemployment (2) • Children not in school (2) due to lack of schools/poor parenting (2) • Drug/alcohol abuse (2) due to despair or gang’s influence (2) • Violence on people (2) due to areas not being lit up at night (2) • Social ills (2) due to lack of income or jobs (2) [ANY ONE]	(2 + 2) (4)

STATE TWO ADVANTAGE OF BACKYARD SHACKS

WHY DO PEOPLE CHOOSE INFORMAL SETTLEMENTS OVER BACKYARDS ?

BUILDING MATERIALS VULNERABILITY TO WEATHER CONDITIONS

IDENTIFY AND EXPLAIN ONE SOCIAL ISSUE THAT DEVELOPS WITH THE GROWTH OF INFORMAL SETTLEMENTS

- 1.5.6 Provide access to basic services (accept examples) (2)
- HOW CAN MUNICIPALITIES REDUCE CHALLENGE OF GROWTH OF INFORMAL SETTLEMENTS
- Legal ownership of the land (2)
 - Self-help schemes involving communities / Provide building material (2)
 - Employment opportunities/ informal sector jobs (2)
 - Upskilling of people (2)
 - Build houses on available land relocating people to these areas (2)
 - Emergency facilities provided (accept examples) (2)
 - Monitoring and policing to improve safety and security (2)
 - Proper planning /Rezoning (2)
 - Improve infrastructure (accept examples) (2)
 - Community consultation/advisory committees to agree on policies (2)
 - Provision of recreational facilities (accept examples) (2)
 - Awareness programmes (accept examples) (2)
- [ANY TWO]** (2 x 2) (4)
- [60]**

QUESTION 2: ECONOMIC GEOGRAPHY OF SOUTH AFRICA

2.1 2.1.1 A (1)

2.1.2 A (1)

2.1.3 B (1)

2.1.4 B (1)

2.1.5 A (1)

2.1.6 B (1)

2.1.7 B (1)

(7 x 1) (7)

2.2 2.2.1 A (1)

2.2.2 C (1)

2.2.3 B (1)

2.2.4 D (1)

2.2.5 B (1)

2.2.6 C (1)

2.2.7 C (1)

2.2.8 B (1)

(8 x 1) (8)

2.3.	2.3.1	R2 billion (1)	(1 x 1) (1)
	2.3.2	2016 - 2018 (2)	(1 x 2) (2)
	2.3.3	Coal mines are located inland/far from the harbour (2) High transport costs due to greater distances to harbour (for export) (2) [ANY ONE]	(1 x 2) (2)
	2.3.4	'Decline in investments' (2) 'Disinvestment' (2) 'Giant coal mining companies have sold or are in the process of selling their operations' (2) 'Environmental lobbying groups' (2) 'Moving towards renewable energy' (2) 'High transport costs' (2) 'Altered customer base' (2) 'Hostile funding environment'(2) [ANY TWO]	(2 x 2) (4)
	2.3.5	(Increased) loss of employment opportunities due to decreased production (2) (Increased) loss of revenue due to unemployment (2) Less contribution due to a reduction in tax collection (2) Reduced foreign exchange due to decreased investments (2) Limited development of infrastructure due to decrease in production (2) Closure of industries/business linked to coal mining (accept examples) (2) Smaller local market for goods due to increased unemployment (2) Spending power of workers decreases which results in economic sectors being negatively affected (2) Increased cost of electricity due to less coal available for generation of power (2) Operational costs of industries will increase (2) [ANY THREE- CANDIDATES MUST QUALIFY RESPONSE]	(3 x 2) (6)

HOW DOES LOCATION OF COAL MINES INCREASE EXPORT COSTS

QUOTE REASONS FOR BLEAK A FUTURE FOR COAL MINES

EXPLAIN HOW THE DECREASE OF MINING COAL HAS A NEGATIVE ECONOMIC IMPACT ON MPUMALANGA

2.4	2.4.1	15% (1)	(1 x 1) (1)
	2.4.2	Sea (1) Air (1) Land (1) (Accept examples) [ANY TWO]	(2 x 1) (2)
	2.4.3	(a) Raw materials (accept examples) are available (2) Large skilled and unskilled labour supply (2) Sufficient water supply (2) Specialised transport/infrastructure (for perishable products) (2) Large market (2) Require less space (2) Electricity is available (2) Suitable climate to grow a variety of crops (2) [ANY TWO]	(2 x 2) (4)
	2.4.3	(b) Lack of /Distance from mineral raw materials (2) Electricity is more expensive (2) No coal for power resources (2) Higher transport costs (2) Unreliable water supply (2) Transport infrastructure not adequate (2) Limited space for development (2) [ANY TWO]	(2 x 2) (4)
	2.4.4	West coast SDI links the South-western Cape core industrial region to Saldanha Bay (harbour) which favours exporting (2) The deep water harbour will allow for the international exportation of larger cargo (2) N7 to Namibia allows for international export by road (2) [ANY TWO]	(2 x 2) (4)

- 2.5 2.5.1 Businesses that are not registered (and do not pay income taxes) (2)
[CONCEPT] (1 x 2) (2)
- 2.5.2 Food (1)
GIVE AN EXAMPLE OF AN INFORMAL ACTIVITY
Flea markets (1)
Street vendors (1)
Laundromats (1)
[ANY ONE] (1 x 1) (1)
- 2.5.3 'Prone to be overlooked' (2)
WHY IS THE INFORMAL SECTOR CONSIDERED PART OF SHADOW ECONOMY
'Ill-considered during policy formulation' (2)
'Disregarded in business strategies' (2)
'Easily associated with corrupt activities' (2)
[ANY TWO] (2 x 2) (4)
- 2.5.4 Access to funding from banks (2)
PARAGRAPH
SUGGEST SUSTAINABLE STRATEGIES GOV AND BUS COULD IMPLEMENT TO STRENGTHEN INFORMAL SECTOR
Provide buildings/more floor space/ infrastructure available (accept examples) (2)
Upliftment of skills/ learnership/mentorship programmes (2)
Partnerships between private sector and informal sector (2)
Provide informal sector with more security (2)
Provide access to basic services (accept examples) (2)
Create more hygienic conditions (2)
Generate more incentives/tenders for informal sector (2)
Provide financial support/grants (2)
Provide access to legal aid (2)
Link them with private business for access to products (2)
Local Government amend bylaws and policies/permits to regulate the sector (2)
[ANY FOUR] (4 x 2) (8)
[60]

SECTION B

QUESTION 3: GEOGRAPHICAL SKILLS AND TECHNIQUES

3.1

3.1.1 B (1) (1 x 1) (1)

3.1.2 A (1) (1 x 1) (1)

3.1.3 There is no obstruction/ no high lying point between the two points (2)
(1 x 2) (2)

3.1.4 38 m (1) (1 x 1) (1)

3.1.5 **Actual Distance = Map distance x Map scale**

Actual Distance = 5.5 (1) cm x 500 m (Range 5.4 – 5.6)
= 2750 m (1) (Range 2700 – 2800 m) (2 x 1) (2)

3.1.6 **Average gradient = $\frac{\text{Vertical interval (VI)}}{\text{Horizontal equivalent (HE)}}$**

$$\begin{aligned} \text{Average Gradient} &= \frac{38}{2750} \quad (1) \\ &= \frac{38}{38} \times \frac{2750}{38} \\ &= 1: 72,36 \quad (1) \end{aligned}$$

If answers for 3.1.4 and 3.1.5 are incorrect but are substituted correctly in 3.1.6 a mark should be allocated for this.

(Range 1:71,05 – 1:73,68) (2 x 1) (2)

3.1.7 Prison (1) (1 x 1) (1)

3.2

3.2.1 B (1) (1 x 1) (1)

3.2.2 Area will experience unpleasant odours/ air pollution (2)
Health threat (2)
It will reduce aesthetic appeal (2)
[ANY ONE] (1 x 2) (2)

3.2.3 H- Irregular (1)
I – Grid/grid iron (accept rectangular) (1) (2 x 1) (2)

WHY DOES
LOCATION
OF
SEWERAGE
WORKS
DECREASE
PROPERTY
VALUE

<p>3.2.4</p> <p>WHY IS STREET PATTERN NOT POPULAR IN NEW DEVELOPMENTS?</p>	<p>Too many intersections (2)</p> <p>Causes traffic congestion (2)</p> <p>Greater possibility of accidents (2)</p> <p>Increase time to reach destination (2)</p> <p>Delay may lead to frustration/road rage (2)</p> <p>Increases cost of fuel (2)</p> <p>Hijacking is more common/smash and grab (2)</p> <p>[ANY ONE]</p>	<p>(1 x 2) (2)</p>
<p>3.2.5</p>	<p>Tertiary (1)</p>	<p>(1 x 1) (1)</p>
<p>3.2.6</p> <p>EXPLAIN WHY AREA 6 WAS SUITABLE FOR ECO ACTIVITY AT 6</p>	<p>Accessible by roads/national route (2)</p> <p>Close proximity to residential areas (2)</p> <p>Available land makes provision for parking (2)</p> <p>Land available for future expansion (2)</p> <p>[ANY ONE]</p>	<p>(1 x 2) (2)</p>
<p>3.2.7</p> <p>HOW HAS THE OPEN CAST MINE CREATED AN ENVIRO INJUSTICE</p>	<p>Results in the removal of natural vegetation (2)</p> <p>Exposes the area to increased soil erosion (2)</p> <p>Polluting the soil/water by mining processes (2)</p> <p>Disrupting the ecosystems/food chains/food webs/natural habitats (2)</p> <p>Extinction/displacement of species (2)</p> <p>Release of air pollutants from blasting/dust (2)</p> <p>Contamination of ground water (2)</p> <p>Decreases the aesthetic appearance/scarring of land (2)</p> <p>Acid mine drainage results in reduction in biodiversity/ecosystems (2)</p> <p>Deforestation leading to soil degradation (2)</p> <p>Environmental despoliation (2)</p> <p>[ANY ONE]</p>	<p>(1 x 2) (2)</p>
<p>3.3</p>	<p>3.3.1 River (1)</p>	<p>(1 x 1) (1)</p>
<p>3.3.2</p>	<p>Perennial water/dam (1)</p> <p>Opencast mine (1)</p> <p>Cultivated land (1)</p> <p>Excavation (1)</p> <p>[ANY ONE]</p>	<p>(1 x 1) (1)</p>
<p>3.3.3</p>	<p>Remote sensing is obtaining information of the earth from a distance /without touching or making physical contact (2)</p> <p>[CONCEPT]</p>	<p>(1 x 2) (2)</p>
<p>3.3.4</p> <p>GIVE ONE VISIBLE ATTRIBUTE OF THE OPEN CAST MINE</p>	<p>Depth (how deep) (2)</p> <p>Width (how wide) (2)</p> <p>Diameter (2)</p> <p>Terraces (2)</p> <p>Shape (2)</p> <p>Area (size of the mine) (2)</p> <p>Type of mine (open cast) (2)</p> <p>Geographical coordinates of the mine (2)</p> <p>Number of slimes dams (2)</p> <p>Address of the mine (other road/ R39) (2)</p> <p>[ANY ONE]</p>	<p>(1 x 2) (2)</p>

3.3.5 Images taken by remote sensing can be taken regularly to get updated information (2)
EXPLAIN HOW THE IMAGE IS MORE EFFECTIVE TO ASSESS THE ENVIRO INJUSTICE THAN THE TOPO MAP
 Series of images allow for tracking the impact over a period of time (2)
 Images can be taken by drone technology which is less costly (2)
 Images can be updated more regularly than topographic maps (2)
 It is an actual image of the mine and not map symbols (2)
 Image is clear or has a high resolution (2)
[ANY ONE] (1 x 2) (2)

[30]

TOTAL: 150